

---

---

**NOTES D'ÉTUDES**

---

**ET DE RECHERCHE**

---

**THE RELIABILITY OF MACROECONOMIC  
FORECASTS BASED ON REAL INTEREST RATE  
GAP ESTIMATES IN REAL TIME:  
AN ASSESSMENT FOR THE EURO AREA**

Jean-Stéphane Mésonnier

October 2006

NER - E # 157



**THE RELIABILITY OF MACROECONOMIC  
FORECASTS BASED ON REAL INTEREST RATE  
GAP ESTIMATES IN REAL TIME:  
AN ASSESSMENT FOR THE EURO AREA**

Jean-Stéphane Mésonnier

October 2006

**NER - E # 157**

Les Notes d'Études et de Recherche reflètent les idées personnelles de leurs auteurs et n'expriment pas nécessairement la position de la Banque de France. Ce document est disponible sur le site internet de la Banque de France « [www.banque-france.fr](http://www.banque-france.fr) ».

Working Papers reflect the opinions of the authors and do not necessarily express the views of the Banque de France. This document is available on the Banque de France Website "[www.banque-france.fr](http://www.banque-france.fr)".

# **The Reliability of Macroeconomic Forecasts based on Real Interest Rate Gap Estimates in Real Time: an Assessment for the Euro Area\***

by

Jean-Stéphane Mésonnier #

October 2006

---

\* I would like to thank Laurent Clerc, Mark Guzman and Hervé Le Bihan for useful suggestions and comments, as well as seminar participants at the 23<sup>rd</sup> International Symposium on Banking and Monetary Economics (Lille, 2006), the 3<sup>rd</sup> International Conference on Developments in Economic Theory and Policy (Bilbao, 2006), the Money Macro and Finance Research Group Annual Conference 2006 and a Banque de France Research seminar. The opinions expressed are those of the author only and do not necessarily reflect the views of the Banque de France.

# Correspondence: Banque de France, Research Directorate, Monetary Policy Research Division, 41-1422 POMONE, 75049 PARIS Cedex 01. E-mail: [jean-stephane.mesonnier@banque-france.fr](mailto:jean-stephane.mesonnier@banque-france.fr).

## **Abstract**

The real interest rate gap or IRG -the gap between the short term real interest rate and its “natural” level-, is a theoretical concept that has attracted much attention in central banks in recent years. This paper aims at clarifying its practical relevance for monetary policy in real time. For this purpose, it provides an empirical assessment of the usefulness of various univariate and multivariate estimates of the real IRG for predicting inflation, real activity and real credit growth in the euro area. The results suggest that the reliability of such indicators for real time policy guidance remains limited.

Keywords : natural rate of interest, monetary policy, forecasting.

JEL Classification: C53, E37, E52.

## **Résumé**

Le concept d'écart de taux d'intérêt réels –i.e. la différence entre le taux d'intérêt réel de court terme et son niveau “naturel”- a, sur la période récente, été l'objet d'une attention particulière de la part des économistes de banques centrales. Cet article se propose de faire le point sur sa pertinence pratique pour la conduite de la politique monétaire en temps réel. Dans ce but, on évalue le pouvoir prédictif de diverses estimations de l'écart de taux d'intérêt réel, obtenues dans un cadre univarié ou multivarié, pour l'inflation, l'activité et la croissance du crédit réel dans la zone euro. Les résultats suggèrent que l'information fournie par de tels indicateurs en temps réel sur les évolutions macroéconomiques futures est d'une fiabilité pour le moins limitée.

Mots-clés : taux d'intérêt naturel, politique monétaire, prévisions.

Classification JEL : C53, E37, E52.

# 1. Introduction

This paper investigates the informational content of various empirical estimates of the gap between the real short term rate of interest and its “natural” level –in short the real interest rate gap, or real IRG- for headline inflation and other policy relevant variables in the euro area.

The old Wicksellian concept of the “natural” or neutral real rate of interest (Wicksell, 1898, 1907) has been considerably revived in recent years, notably due the large audience gained by Michael Woodford’s (2003) “neo-Wicksellian framework” for the analysis and design of optimal monetary policy. Although there is still nothing like a consensus as to the precise definition of this equilibrium level of the rate of interest, it is frequently defined in practice as the level of the real short term rate of interest which is consistent with output at its potential level and a stable rate of inflation in the medium term (ECB, 2004). The potential policy relevance of the concept, at least as an ex post candidate indicator of the monetary policy stance, at best as a potential guide for policy action, has motivated a bunch of papers presenting empirical estimates of the natural rate of interest for the United States (Laubach and Williams, 2003), the Euro area (see e.g. Crespo-Cuaresma et al., 2004, Giammarioli and Valla, 2003, Mésonnier and Renne, 2004, Cour-Thimann et al., 2004, Garnier and Wilhelmssen, 2005) or other developed economies (notably Neiss and Nelson, 2003, and Larsen and McKeown, 2004, for the UK, Basdevant, Björkstén and Karacedigli, 2004, for New\_Zealand, Manrique and Marquez, 2004 for Germany)<sup>1</sup>. According to many of these papers, the real equilibrium rate of interest in the major economies may have varied substantially over the last two to three decades, which highlights the importance of a correct perception of fluctuations of the natural rate by the policy maker.

Ultimately, however, a crucial point for deciding whether or not central banks should compute and monitor on a regular basis measures of the natural rate of interest (NRI) and of the corresponding real interest rate gap (IRG) is the predictive power of such indicators regarding future fluctuations of key policy variables, like inflation or GDP growth. In a recent speech, Bundesbank President Axel Weber (2006) expresses very clearly that this should be one major concern of the monetary policy-maker in practice:

“One can not judge the usefulness of the natural rate of interest for monetary policy purposes without taking into account the serious problems that accompany its measurement and estimation (...). Seen from this perspective, it may be worthwhile to examine in more details what information content the real-time estimates of the natural rate of interest from various empirical approaches –or more precisely the implied interest rate gaps- have for future inflation”.

---

<sup>1</sup> See Giammarioli and Valla (2004) for a survey of this literature.

Unfortunately, available indications from previous studies of an informational content of the IRG for inflation are exclusively based on in-sample evidence of lagged correlations and cannot settle the point raised by Prof. Weber. Indeed, in-sample regressions can only be suggestive of the potential of the real IRG as a leading indicator of the policy variables. Since in the majority of cases the estimated level of the natural rate of interest at a given time-period incorporates some information about the future values taken by the other variables used for estimation –among which inflation-, much of the exhibited in-sample cross-correlations may be spurious and in fact very poorly indicative of the true informational content of the real IRG for inflation in *real* time.

Therefore, I endeavour in this paper to test in a more rigorous way for the practical significance of empirical real IRG estimates for the euro area, in the spirit of previous studies that have assessed the reliability of inflation forecasts based on output gap estimates in real time (Orphanides and van Norden, 2005). For this purpose, I investigate the leading indicator properties of real IRG estimated via a range of statistical and semi-structural techniques, whose implementation is simple enough to be supposed useful in practice for a central bank forecaster. Given the relatively recent introduction of the euro, the equivalent of the existing real time data sets for the US, spanning over two to three decades of real time releases, is not available for the euro area. However, having access to a real-time database, which allows to reproduce the situation faced by a policy maker in real time, is key to assess in a credible way how reliable is the informational content of any IRG estimate, as illustrated in a recent paper by Clark and Kozicki (2004)<sup>2</sup>. Therefore, I constructed for the purpose of this exercise an original real-time database that covers the first seven years of the euro. The real-time IRG series estimated with this data set were then used to simulate a classical out-of-sample forecasting experiment for euro area inflation and other macroeconomic variables.

The rest of the paper is organized as follows. Section 2 presents the alternative measures of the real IRG that are implemented in the rest of the paper. Section 3 briefly surveys the available evidence of an informational content of various IRG estimates for the euro area and presents a preliminary assessment based on in-sample correlations with macroeconomic variables of interest. Section 4 details the methodology for the simulated out-of-sample forecasting experiments and section 5 comments the results. Robustness checks are provided in section 6, while Section 7 concludes.

---

<sup>2</sup> Clark and Kozicki notably build on the pioneering work of Orphanides and van Norden (2002), who provide evidence of difficulties in estimating the output gap in real time, which suggests analogous real-time difficulties in estimating the also unobservable equilibrium real interest rate. Using a range of unobserved components models and 22 years of real-time data vintages for the United States, they find that data revisions substantially contribute to imprecision in real-time estimates of the equilibrium real rate of interest, up to 100-200 basis points of revisions to less recent estimates and about 50 basis point for more recent ones.

## 2. Alternative measures of the interest rate gap

The semi-structural approach to the issue of NRI estimation, as illustrated in a companion paper by Mésonnier and Renne (2004), is only one of the most frequent methodological and conceptual approaches of this issue, the structural approach being another important one (cf. Giammarioli and Valla, 2004, for a survey of conceptual and technical issues). To put it shortly, whereas the structural approach, as in Woodford (2003), defines the neutral rate as the real equilibrium rate of interest in the flexible-prices (and possibly flexible-wages) version of a standard neo-Keynesian micro-founded DSGE<sup>3</sup>, the semi-structural approach usually incorporates the real interest rate gap into the simplified framework of a reduced form model of the economy (an AS-IS scheme) and postulates some exogenous dynamic for the natural rate and other unobservable variables (like the rate of growth of potential output). While structural measures of the neutral rate of interest are obtained on the basis of a methodology inspired by Rotemberg and Woodford (1997), semi-structural ones are generally estimated with the Kalman filter, in the vein of numerous empirical studies providing with estimates of the output gap or of the NAIRU<sup>4</sup>.

From the viewpoint of the policy-maker, one may argue that the time-series or semi-structural approach of empirical NRI estimation strikes a convenient compromise between the complexity of a more structural approach, which involves the complete derivation and estimation of micro-founded DSGE model, and the arbitrariness of simple univariate trend extractors, such as the commonly used HP filter, whose simplicity of use may be at the cost of economic interpretation. For the sake of comparison however, I considered a few competing approaches of the IRG for the euro area, with the noticeable exception of structural estimation. The complexity of structural estimation of the IRG with an estimated -or even calibrated- DSGE model hinders indeed its implementation in a simulated real time experiment, all the more than the available DGSE models of the euro area economy are largely posterior to the introduction of the euro (see for instance Smets and Wouters, 2003). The selected approaches cover nevertheless a broad spectrum of available methods. I present briefly below the way I get the various IRG implemented here. Specific data issues are detailed in Appendix A.

### *2.1. Simple univariate statistical estimates*

The simplest way to estimate a real interest rate gap is to deflate the nominal short term rate by a measure of (year-on-year) current inflation and to detrend this ex post real interest rate series using

---

<sup>3</sup> The model is then most often calibrated for simulation purposes, as in Giammarioli and Valla (2003), but it can also be estimated using Bayesian methods, as in Smets and Wouters (2003).

<sup>4</sup> For estimations of the latter two unobserved variables, see e.g. Staiger, Stock and Watson, 1997, Peersman and Smets, 1999, Gerlach and Smets, 2002, Laubach, 2001, Fabiani and Mestre, 2004.

some univariate statistical filter<sup>5</sup>. I consider three cases in the following. First, I detrend the observed real interest rate series adjusting a quadratic trend to the observed real interest rate series (noted as QT model in the following). Second, I detrend it using the classical HP filter, which is also one of the time-series methods frequently used in practice to quickly estimate output gaps, although an obvious disadvantage of this approach as well as the previous one is clearly their lack of a firm theoretical basis<sup>6</sup>. More precisely, I consider here two cases, depending on the choice of the smoothing parameter: with a smoothing parameter of 1,600 (the standard value for quarterly data) on the one hand and of 26,500 on the other hand, as recommended for instance by Orphanides and Williams (2002). The trend extractor once Fourier transformed into the frequency domain, its frequency response function can be seen as a low-pass filter, with a frequency response declining monotonically from nearly one at null frequency to zero at high frequencies. The transition occurs at a cut-off frequency –defined as the frequency for which the gain of the filter is 50%- which can be expressed as a simple function of the smoothing parameter<sup>7</sup>. The chosen values for the smoothing parameter hence roughly correspond to an extraction of cycles of less than 10 and 20 years respectively (noted as HP1 and HP2 in the following).

Second, I detrend the real interest rate applying the Christiano and Fitzgerald (2003) asymmetric band pass filter (the CF model hereafter). The filter approximates an optimal band-pass filter like the more common Baxter and King (1999) filter, but, in contrast to the latter, weights are asymmetric in past and future values of data and they vary over time. As a consequence, the CF filter does not lose any observations at the end of the sample for trend estimation, while a major inconvenient of the Baxter and King (BK) filter is that it conventionally requires two to three years of raw data at each end of the trend outcome window. Using the BK filter would have implied in practice to extrapolate our real interest rate series over a few years, using e.g. standard ARIMA modelling. Orphanides and van Norden (2005) for instance extrapolate output series in order to filter them using the BK filter and assess the usefulness of the resulting output gap estimate for modelling inflation. Nevertheless, such an extrapolation would be meaningless in the particular case of a real interest rate series, since this would imply unwarranted assumptions about future policy moves at the end of sample. The CF filter is specified in the following so as to extract cycles of 2 to 40 quarters. Consistently with the results of stationarity tests for the real interest rate (see appendix B), the underlying series is assumed to be integrated of order one and is consequently drift corrected before the filter is applied.

---

<sup>5</sup> The current annual rate of inflation (with the price level expressed in logs) is equivalent to the simple non-weighted average of the last four lags of quarterly inflation. It can then be seen as a simple way to form current expectations of next period quarterly inflation. In practice, simple estimates of the real interest rate often rely on current annual rather than quarterly inflation, the former being by construction less volatile than the latter.

<sup>6</sup> The initial presentation of the HP filter dates back to a seminal contribution by Hodrick and Prescott (1980). See Hodrick and Prescott (1997) for the published version of the genuine working paper. For a presentation of the filter in its unobserved-components form, see for instance King and Rebelo (1993).

<sup>7</sup> The relation between the cut-off frequency  $\nu_c$  and the smoothing parameter  $\lambda$  is  $\nu_c = (\pi/4)^{-1} \arcsin(2/\lambda^{1/4})$ , see for instance Iacubucci and Noullez (2005).



## 2.2 A multivariate unobserved-components (UC) model: the Harvey-Jaeger model

Multivariate unobserved component (UC) models estimated with the Kalman filter offer a general framework for decomposing macroeconomic time series into unobserved trend and cycle, allowing for explicit dynamic structure for these components and accounting for interactions between theoretically related variables. Among several alternatives<sup>8</sup>, I consider more specifically a multivariate version of the Harvey and Jaeger (1993) model, which has been applied recently to the issue of NRI estimation in the euro area (see Crespo-Cuaresma et al., 2004). Let us suppose that the observed vector of time series  $z_t = (r_t, y_t, \pi_t)'$ , whose components are the ex post real interest rate, (log of) real GDP and the rate of quarterly inflation respectively, can be decomposed into the sum of a trend, a cycle and an irregular component:

$$(2.2.1) \quad z_t = \mu_t + \varphi_t + \varepsilon_t$$

By assumption, the multivariate trend component  $\mu_t$  is defined as a local linear trend, that is to say a random walk with drift where the drift itself follows a random walk:

$$(2.2.2) \quad \mu_t = \mu_{t-1} + g_t + \tau_t$$

$$(2.2.3) \quad g_t = g_{t-1} + \zeta_t$$

The stochastic cyclical component is then specified as a sine-cosine wave with a dampening factor:

$$(2.2.4) \quad \begin{pmatrix} \varphi_t \\ \varphi_t^* \end{pmatrix} = \rho \begin{bmatrix} \cos \lambda & \sin \lambda \\ -\sin \lambda & \cos \lambda \end{bmatrix} \otimes I \begin{bmatrix} \varphi_{t-1} \\ \varphi_{t-1}^* \end{bmatrix} + \begin{pmatrix} \kappa_t \\ \kappa_t^* \end{pmatrix}$$

The errors in equations (2.2.1) to (2.2.4) are assumed to be i.i.d mean-zero, Gaussian, mutually uncorrelated processes. Nevertheless, the two disturbance terms in (2.2.4) are constrained to have the same variance. Following Crespo-Cuaresma et al. (2004), I limit to the case where the variance of  $\tau_t$  in equation (2.2.2) is assumed to be null, which implies a smoother trend component and empirically tends to improve the fit of the model<sup>9</sup>.

## 2.3. A semi-structural UC model: the Mésonnier-Renne model

The MR approach of the NRI for the euro area consists in estimating a simple restricted VAR model of the euro area economy with the Kalman filter, broadly following the lines of Laubach and Williams (2003) for the United States. The authors focus on a medium-term notion of the real natural interest

<sup>8</sup> See for instances the UC models implemented for business cycle extraction by Orphanides and Van Norden (2002).

<sup>9</sup> The Kalman filtering procedure requires to set some initial conditions regarding the mean and covariance matrix of the unobserved variables. As commonly done, simple diffuse priors (HP filtered trends) are used to guess plausible initial conditions. Besides, I initialize the procedure of likelihood maximization over the vector of parameters using values close to the results of the baseline model in Crespo-cuaresma et al. (2004) –correcting for the different frequency of the data sets-. In particular, the initial value for  $\lambda$  is set to 0.52, which corresponds to short business cycles of three years (possibly related to the cycle of inventories, as argued by Bentoglio et al., 2002) and the initial attenuation factor  $\rho$  is postulated to be 0.85 (which corresponds to a half-life of cyclical shocks of 5 quarters).

rate, which can be described as a “non accelerating-inflation rate of interest” (NAIRI). They postulate that the dynamics of the NRI are dictated by the low frequency fluctuations of potential output growth and assume that both follow a stationary process. Inflation expectations one-quarter ahead, which are required to deflate the short term nominal rate of interest and compute an *ex ante* real rate of interest, are supposed to be rational and are inferred from the model. The model consists then in the following six equations:

$$\left\{ \begin{array}{l} (2.3.1) \quad \pi_t = \alpha_1 \pi_{t-1} + \alpha_2 \pi_{t-2} + \alpha_3 \pi_{t-3} + \beta z_{t-1} + \varepsilon_t^\pi \\ (2.3.2) \quad z_t = \Phi z_{t-1} + \lambda (i_{t-2} - E_{t-2}(\pi_{t-1}) - r_{t-2}^*) + \varepsilon_t^z \\ (2.3.3) \quad r_t^* = \mu_r + \theta a_t \\ (2.3.4) \quad \Delta y_t^* = \mu_y + a_t + \varepsilon_t^y \\ (2.3.5) \quad a_t = \psi a_{t-1} + \varepsilon_t^a \\ (2.3.6) \quad y_t = y_t^* + z_t \end{array} \right.$$

where  $\pi$ ,  $i$ ,  $y$ ,  $z$ ,  $r^*$  and  $\Delta y^*$  stand for quarterly inflation (annualized), the nominal short term rate of interest, real GDP, the output gap, the natural real interest rate and potential output growth respectively. Lags of the dependant variables in the first two equations are selected by the data and the hypothesis of an accelerationist form of inflation (i.e. that the coefficients of lagged inflation sum to unity) is not rejected empirically. The  $\psi$  parameter is estimated to be close to but less than unity.

The first equation can be interpreted as a backward-looking Philips-curve, the second as an IS-curve. The remaining equations state the dynamics of the natural rate and of potential output growth and define the output gap. According to this model, stable inflation is thus consistent with both null output and interest rate gaps and a departure of the real interest rate from its neutral level affects quarterly inflation with a lag of three quarters. Interestingly, no equation for the nominal rate of interest is stated, which means that the monetary policy reaction function remains implicit. Complete model estimation by maximization of the likelihood requires the calibration of the ratio of the variances of innovations to potential output growth and the output gap on the one hand, and of the  $\theta$  parameter analogous to a constant relative risk aversion of consumers (see Mésonnier and Renne, 2004, for details). In the following, these calibrations are maintained as in the original paper.

### 2.5. A comparison of the alternative estimates over 1979-2004

Chart 1 shows the competing measures of the interest rate gap, as estimated over the whole 1979Q1-2005Q3 period on the basis of revised (“final”) data. At first sight, the outcomes from the mechanical statistical filters (QT, HP, CF and HJ models) appear to be very close from one another and of limited amplitude (in a corridor between -2.0% et 2.0%). Besides, the very close fluctuations of the two HP filtered gaps suggest that most of the fluctuations in the ex post real interest rate correspond to cycles of up to 10 years (the cut-off period of the HP1 filter and of the CF model). Conversely the MR

baseline IRG exhibits fluctuations that are similar in amplitude to that of the simple demeaned real interest rate over the last two and a half decades (roughly speaking from -4.0 % to +7.0%).

*[insert Chart 1 about here]*

Broadly speaking, all IRG indicators point to a switch from an inflation-accelerating stance (a negative IRG) in the late 1970s to a marked disinflationary policy in the early 1980s (a positive IRG), which is consistent with the common knowledge about the general shift in policy stance during the “Volcker era”. This disinflationary stance in the Europe of the 1980s is however mostly emphasized by the MR measure. An also relatively consensual spike in the early 1990s reflects the vigorous interest rate hikes by some central banks of the former European ERM to counter the speculative attacks which led to the 1992-1993 crises, whereas most measures converge towards a diagnosis of expansionary monetary policy in 1999. However, from 2000 on, the various indicators tend to tell diverging stories. In particular, the MR and HJ Kalman filter based IRG agrees with the simple HP filtered IRG (at least up to 2004) and signals a relative return to neutrality, while a simple demeaned real interest rate would point to a considerable negative gap, which seems quite implausible considering the mixed growth and relatively subdued inflation records over the first years of the 2000 decade in the euro area. Regarding 2005, i.e. the end of the sample, the MR gap leaps more evidently into the negative territory, which would appeal for a “normalization” of the accommodative monetary policy stance, a story that one could easily reconcile with the ECB’s putting an end in December 2005 to its two-years long no-change policy and the launch of a new series of interest rate hikes from end 2005 onwards.

### **3. In-sample evidence on the informational content of real IRG estimates for inflation**

The standard interest rate channel of the transmission mechanism of monetary policy relies on there being a link between short term real interest rates and the real side of the economy. This can be easily understood within the framework of the simple macroeconomic workhorse model, where a Philips curve combines with an IS curve to account for a transmission of monetary policy impulses first to aggregate demand and finally to inflation<sup>10</sup>. The main components of aggregate expenditure which are theoretically held to be affected by changes in the short term real interest rate are then consumption, although substitution and wealth effects can work in opposite directions, and investment. However, the empirical evidence on these expected links is rather mixed (see e.g. the survey in Taylor, 1999). As argued for instance by Neiss and Nelson (2003), who exhibit a positive correlation between the short term real rate and detrended output in the UK over 1980-1999, the reason for this could be unacknowledged changes in the level of the “natural” rate of interest. Consequently, substituting the

---

<sup>10</sup> While modern central banks have a direct command of the short term nominal interest rate only, monetary policy moves are largely transmitted to the real short term rate also, due to the stickiness of inflation expectations, at least for short term horizons.

real IRG for the sole real interest rate should help in restoring empirically the missing negative correlation suggested by the theory.

In this section, I review the available evidence of an informational content of various real IRG measures for inflation in the euro area, which is exclusively in-sample. I complete this brief survey with a preliminary assessment of the predictive power of the selected real IRG measures for some key macroeconomic variables on the basis of simple in-sample cross-correlations.

### *3.1. A brief survey of available evidence in the euro area*

In order to account for the possible consequences of adopting different technical definitions of the NRI as extant in the literature, the available evidence can be most conveniently summarized along the common distinction between structural approaches to the measurement of this unobservable variable and semi-structural or time-series ones.

Among the “structural” papers, Giammarioli and Valla (2003) - who adapt Neiss and Nelson’s (2003) model and methodology to euro area data- display simple correlations between inflation and lagged values of their estimated IRG for the euro area over 1973-2000. The correlation is consistently negative, of the same order of that found by Neiss and Nelson for the UK (between 0.5 and 0.6), and similarly tends to increase at longer lags of the IRG. The authors complete this piece of evidence with an additional in-sample regression of inflation on its lagged value and the lagged IRG and conclude that the latest is likely to contain valuable information about future inflation.

Following a statistical approach, Crespo-Cuaresma et al. (2004) produce a Kalman filtered estimate of the NRI over 1991-2002 in the euro area that is adjusted for the estimated impact of prevailing intra-EMU exchange rate risk-premia on the level of money market rates of interest before the euro. Their NRI estimate does not rely however on constraints imposed to the VAR by a reduced form AS-AD scheme but on simpler trend-cycle decomposition following the lines of Harvey and Jaeger (1993). They find that the resulting real IRG is negatively correlated with monthly and annual inflation up to a lag of six months. Besides, the correlation is higher in absolute terms when the real IRG is based on the risk-premium-adjusted version of the NRI than of a non-adjusted one. Recently, Garnier and Wilhelmsen (2005), who replicate the Laubach and Williams (2003) methodology with euro area data over the past 40 years, find that over the long-run the correlation between inflation and the (two-sided) real rate gap is strongly negative.

### *3.2. In-sample evidence from simple cross-correlations*

To end with, I provide here preliminary in-sample evidence of the informational content of the selected interest rate gaps. Table 1 reports the cross correlations of quarterly inflation, the quarterly growth rates of real GDP and real credit and the rate of unemployment with the nominal short term

rate of interest, the *ex post* short term real rate, as well as the various IRG estimates obtained. The computations are shown for the period 1986-2004, for which the rate of HICP inflation and the real interest rate in the reconstructed euro area may be reasonably deemed stationary, but computations over different periods (e.g. from 1991 on) lead to qualitatively similar results.

*[insert Table 1 about here]*

As regards inflation, the results only partially meet our expectations. Interestingly enough, the actual real and nominal interest rates appear to be highly *positively* correlated with future inflation at horizons up to two years ahead, which highlights in contrast the relevance of turning to NRI and IRG computations to identify an inflationary or disinflationary stance of monetary policy. Unfortunately, the same conclusion holds for some of the simple univariate IRG estimates (QT and HP2). Only the IRG estimated on the basis of multivariate UC models exhibit zero to slightly (but possibly not significantly non-zero) negative correlations with future inflation. Whatever the case, the correlation coefficients for the (one-sided) HJ and MR IRG remain contained (with a maximum absolute value of about 0.1) and stand clearly below the levels displayed in other studies relative to the euro area, notably Giammarioli and Valla (2003), and Garnier and Wilhelmsen (2005) and, but to a lesser extent, Crespo-Cuaresma et al. (2004).

Three main reasons may account for the higher negative correlations between inflation and IRG estimates found in those first two papers. First, the actual real rate of interest is often highly correlated with their estimated IRG because their NRI estimate exhibit very-limited long run fluctuations and only contained short run volatility. Second, the sample used generally includes the high inflation episode of the 1970s and the high nominal rate episode of the early 1980s, which explains most of the strong negative correlation between inflation and the real rate of interest obtained over the last few decades, hence between inflation and the estimated real IRG<sup>11</sup>. As a matter of fact, the correlation coefficients between inflation and the MR one-sided IRG over its whole period of availability (since 1979) are consistently higher in absolute terms and negative (up to -0.23 with a two years lag)<sup>12</sup>. Finally, a possible explanation that has already been put forward by some authors (e.g. Larsen and McKeown, 2004) is that, in the 1990s, the policy maker may have better used *ex ante* the informational content for inflation that is more or less captured in real IRG estimates, which would have reduced *ex post* the cross correlations between the objective variable -inflation- and lags of the real IRG.

Regarding the informational content for real activity and unemployment, the univariate IRG estimates exhibit relatively strong negative cross correlations at horizons less than one year with future output

---

<sup>11</sup> For instance, the correlation between quarterly inflation and past values of the *ex post* real interest rate over 1979-2004 is negative for lags superior to two quarters, increases with time lag and reaches -0.34 with a two years lag (instead of +0.52 over 1986-2004).

<sup>12</sup> The results are not reproduced here for brevity. However, the correlations obtained over the 1979-2004 period are likely to be spurious due to the plausible non-stationarity of inflation and interest rates series, so they deserve to be considered with caution.

growth, while short term nominal and real interest rates appear to be at best uncorrelated with this variable. However, the univariate gaps show also strong negative correlations to future rates of unemployment, which is clearly less intuitive. The results related to multivariate estimates are however mixed. One-sided HJ and MR IRG estimates are negatively but poorly correlated to future output growth, while the MR gap appears to be strongly positively correlated to future unemployment, which suggests, with an eye on equation 2.3.2 in section 2, that the rate of unemployment fluctuates more in synch with the level of the inflation-stabilizing output gap consistent with the MR IRG than does output growth. Figure A.2 in Appendix, as well as the computation of the empirical correlation coefficients (0.64 for the correlation between unemployment and the MR output gap, to be compared with only 0.16 for the correlation between this output gap and quarterly annualized growth), amply comfort this intuition.

Last but not least, all gaps (excepted the HJ IRG), as well as levels of the interest rates, exhibit strong in-sample correlations with future credit growth, including at somewhat distant horizons.

## 4. A simulated out-of-sample forecasting experiment

### 4.1. Methodology of the forecasting simulation

In order to investigate the forecasting power of various measures of the short term real interest gap for macroeconomic variables, I simulated a classical out-of-sample forecasting exercise (see e.g. Stock and Watson, 1999). Recent applications of this methodology to euro area data include studies of the informational content of monetary indicators for inflation (Nicoletti-Altimari, 2001), as well as of various measures of core-inflation (Le Bihan and Sédillot, 2000), and of various sets of financial indicators such as term and credit spreads (Crespo-Cuaresma et al., 2005, Forni et al., 2003, Nobili, 2006). I thus consider a forecasting equation of the general form:

$$(4.1) \quad y_{t+h,t} = \alpha + \gamma(L)y_{t-1} + \beta(L)x_{t-1} + u_t$$

where  $y_{t+h,t}$  is the annualised h-step forward rate of growth of the variable of interest  $Y_t$ ,  $y_t$  its annualised quarterly rate of growth,  $X_t$  is a candidate leading indicator,  $\gamma$  and  $\beta$  are polynoms in the lag operator  $L$  and  $h$  denotes the horizon of the forecast in quarters. Importantly for the realism of the experiment, it has to be noticed that the usual reporting lags imply that GDP and even price data that are required to compute IRG estimates for quarter  $t$  are only known in the course of quarter  $t+1$ . In order to account for this, I forecast  $y_{t+h,t}$  with data for quarters  $t-1$  and earlier.

The precise definition of  $y_{t+h,t}$  depends on the degree of integration of the forecast variable. If  $Y_t$  stands for a variable (in logs) which is deemed to be integrated of order one, then we have:

$$(4.2) \quad y_{t+h,h} = \frac{400}{h} \cdot (Y_{t+h} - Y_t)$$

Conversely, if we assume  $Y_t$  to be integrated of order two, then  $y_t$  in equation (4.1) refers to the first difference of the quarterly rate of growth of  $Y_t$  (annualised), and we have, following the approach in Stock and Watson (1999, 2003):

$$(4.3) \quad y_{t+h,t} = 400 \left[ \frac{1}{h} (Y_{t+h} - Y_t) - (Y_t - Y_{t-1}) \right]$$

Once this definition adopted, I proceeded in the following way. Equation (4.1) is first estimated for a given regressor  $X_t$  and for a given forecast horizon  $h$  over the “initial” sample of data (up to period R). The degrees of polynomials  $\gamma$  and  $\beta$  are automatically and jointly selected on the basis of the Akaike information criterion (AIC), with a maximum of four lags allowed for each regressor<sup>13</sup>. A h-step ahead forecast  $y_{R+h,R}$  is then computed using the estimated equation and the corresponding h-step forecast error is stored. A new quarter of data is then added to the regression sample (the sample window includes now R+1 observations). Equation (4.1) is re-estimated over that new sample, with the number of lags of the RHS variables again automatically selected and the whole procedure is repeated until the regression sample reaches the end of the available series.

For each model  $M(Y,X,h)$ , i.e. each candidate leading indicator of the variable to be forecast and each forecast horizon  $h$ , this produces a series of out-of-sample forecast errors. If we denote as P the number of out-of-sample observations ( $P=T-R$ , where T is the total number of observations), the number of forecast errors obtained is equal to  $P-h+1$ . The predictive content of model  $M(Y,X,h)$  is then summarised in a standard way in terms of a root mean of squared forecast errors (RMSE).

As is usual for such an exercise, the forecasting accuracy of model  $M(Y,X,h)$  is assessed against a benchmark autoregressive model for  $y_{t+h,t}$ , taking the form :

$$(4.4) \quad y_{t+h,t} = \alpha + \chi(L)y_{t-1} + v_t$$

For a given autoregressive model  $M'(Y,h)$  corresponding to equation (4.2), a series of out-of sample forecast errors is produced using the same recursive procedure as above, the lag length of the dependent variables in (4.2) being selected automatically at each step according to the Akaike information criterion (AIC)<sup>14</sup>.

---

<sup>13</sup> These limits are common, see for instance Kamada (2005). Besides it has been observed that allowing a maximum of eight lags does not change the results, the number of required lags remaining generally below four.

<sup>14</sup> It should be noted that for contemporaneous estimations of concurrent models M and M', the lag length p and p' are not required to be identical, which means that the models may be non-nested.

#### *4.2. Real-time estimations of the real interest rate gaps*

The experiment conducted in this paper is designed to mimic in a simple way the problem facing a policy maker who wishes to forecast inflation or other macroeconomic variables in real time. The issue of the availability of a consistent real-time dataset, such as the Croushore and Stark database (2001) used for instance by Orphanides and van Norden (2005) to assess the usefulness of output gap estimates for inflation forecasting in the US, is then of crucial importance. Unfortunately, no such data set is available for the euro area yet, at least over a long enough period. Therefore, I reconstructed for the purpose of this study an original set of monthly real-time GDP vintages for the euro area that extends the data set currently made available by the EABCN on its website, spanning the observation period from the beginning of the euro to the end of 2005 (see Appendix A for data issues)<sup>15</sup>. Besides, and following e.g. Orphanides and van Norden (2005) for the US, I assumed that inflation and unemployment rate series were little revised by statisticians, as notably seasonal adjustment procedures usually account for most of the small changes observed between successive price releases in the ECB Monthly Bulletin. Thus, I used final versions of those series, combined with the real time GDP vintages, in the out-of-sample simulations.

As regards IRG as well as unemployment or output gap estimates, policy-makers may face three sources of uncertainty in real time: first, the underlying data (in particular GDP, which is here key for the multivariate UC models) are usually revised by statisticians ; second, the addition of new data may change our assessment, including for past quarters (this is often referred to as the “end-of-sample problem”); third, the information added by new data or revisions may invite us to modify the models used for estimation of the gap –in case the estimates are model-based – or at least to re-estimate their parameters. With this in mind, four stages of in the measurement process of real IRG can be defined: real-time, quasi-real time, quasi final and final<sup>16</sup>. The “final” IRG estimate is computed using the latest vintage of underlying data over the whole period under review (here the period spanning from the first quarter of 1979 to the third quarter of 2005, using “final” data releases as of end of May 2006) to eventually fit a model and “detrend” the real interest rate<sup>17</sup>. On the contrary, supposing that vintages of real-time data sets are available for each quarter, each vintage of the real time real interest rate can be “detrended” with one of the chosen techniques to construct a set of real time IRG series. In case of model-based approaches, this in particular implies also that the model parameters have to be re-estimated for each real-time vintage. Quasi-real time and quasi-final estimates are located between these two extremes. The quasi-real time IRG series are simply the rolling IRG series estimates based on the final data set (hence allowing for changes in underlying model parameters with the addition of

---

<sup>15</sup> The Euro Area Business Cycle Network is currently developing a wide-ranging real-time database for the euro area, but real-time GDP vintages are not available before observation date 2001Q1.

<sup>16</sup> I follow here the typology first proposed by Orphanides and Van Norden (2002).

<sup>17</sup> The term vintage is generally used to describe the values for data series as published at a given point in time.



new data)<sup>18</sup>. Lastly, in case of multivariate UC models like the HJ and MR models, I define the quasi-final IRG series as the one-sided (filtered) IRG series estimated both with the final dataset and fixed final (full-sample) estimates of the model parameters<sup>19</sup>.

As an illustration, Chart 2 shows real time and final IRG as obtained from the competing methods. For each technique, the series plotted here consists in all the end-of-sample estimates of the successive quasi-real-time IRG series. Interestingly, the quasi-real MR and HJ IRG are close to but not strictly equivalent to the corresponding quasi-final estimates of the gap, which highlights the impact of the addition of new data on the parameters estimates of such UC models. However, the true real-time MR gaps depart substantially from the quasi-real-time ones (up to one percentage point in some quarters). This suggests that the impact of GDP revisions on the outcome is even more important.

*[insert Chart 2 about here]*

This being said, I construct for the purpose of the out-of-sample experiments several ensembles of real time IRG vintages, one for each of the estimation techniques detailed in section 2. For a given technique, the first real-time IRG series is estimated over 1979Q1 to 1998Q4 (for use in forecasts made in 1999Q1), and successive series are estimated for increasing samples up to 2005Q3 (corresponding to the information available in 2005Q4). The data set comprises then 28 quasi-real-time IRG series for each of the estimation techniques.

## **5. Results of the out-of-sample simulations**

### *5.1. Forecast variables*

The forecasting exercise, as simulated over the first seven years of euro area existence, has been carried out for four dependant variables of interest, HICP inflation, real GDP growth, the quarterly change in the rate of unemployment and the real rate of growth of credit to the private sector.

Although in the euro area the mandate of the ECB confers a prominent weight to the objective of price stability, the practice of major central banks converges in acknowledging some weight for a concomitant real stabilization objective, at least in the short run, as advocated for instance by the proponents of flexible inflation targeting schemes (see for instance Faust and Henderson, 2004, and references therein). This (implicit) dual objective being usually conceived in terms of volatility of the output gap, this would invite to consider output gap measures among the variables of interest to be forecast. The emphasis on real GDP growth instead of some measure of the output gap aims at

---

<sup>18</sup> For the MR IRG, quasi-real time estimates are the successive smoothed (two-sided) estimates as obtained on the successive partial samples. The smoothed estimate is preferred for it makes obviously a complete use of the information contained in a given partial sample.

<sup>19</sup> Note that in case of the HP filtered real interest rate gap, for which no parameter are estimated, the quasi-real time and quasi-final series estimated over a given sample are identical.

avoiding complex and still inconclusive debates about the best proxy for this unobservable variable, having in mind that the commonly used statistical output gap estimates (HP filters, UC models) as well as those derived from ad hoc production functions do not match *a priori* the theoretically correct definition of the gap as the difference between actual output and its flexible prices-flexible wages counterpart<sup>20</sup>. Besides it can be argued that some major central banks in the past may have focused more on the *change* in the output gap (that is output growth less potential output growth) than on the *level* of the output gap itself<sup>21</sup>.

Finally, the inclusion of real credit growth among the set of variables to be forecast could be justified both by the emphasis put by the ECB on its monetary pillar, since credit to the private sector makes up the bulk of the broad monetary aggregate counterparts, and by concerns for financial stability<sup>22</sup>. Besides, with a reference to the genuine Wicksellian framework (Wicksell, 1898), the excess demand arising from a negative IRG should materialize through the build-up of an excess demand for credit which the banking system would accommodate, leading to both inflationary pressures and the build-up of financial imbalances. Hence, investigating the effect of a non-negative IRG on credit developments seems to be fully relevant from a Wicksellian perspective.

For each macroeconomic variable of interest and each estimation technique of the real IRG, the forecasting exercises have been conducted with horizons of two, four and six quarters. Beside the already presented IRG, I also test for the predictive power of a simple alternative candidate, the first difference in the short term nominal interest rate (hereafter DSTN model). Under the assumptions of sticky enough yearly inflation and natural rates from one quarter to the next, changes in the nominal interest rate can be viewed as proxy of changes in the real IRG. Furthermore, it can be argued that using changes in the nominal rate in this way is equivalent to implicitly defining an estimated IRG as a one-sided filter of interest rate changes with weights based on the estimated coefficients in Equation (4.1)<sup>23</sup>.

According to preliminary stationarity tests, the majority of the differenced series to be forecast (i.e. real growth rates of GDP and credit and the rate of change in the unemployment rate) as well as real IRG may be deemed to be stationary. An important exception is HICP inflation, which appears to be integrated of order one over the observation sample. Depending on the diagnosis about the order of integration of the dependant variable, the choice of the forecasting model was made as explained in section 4.1. Forecasts relate then to the average future rate of GDP, credit and unemployment growth

---

<sup>20</sup> Nevertheless, for illustration purpose, I also checked the predictive power of competing IRG measures for three alternative simple statistical (final) estimates of the output gap filtered with a smooth HP filter and two standard band-pass filters, namely the Baxter-King and the Christiano-Fitzgerald filters. None of the selected IRG helps to improve forecasts of any of these statistical output gaps. Results are available upon request.

<sup>21</sup> For the Bundesbank, see Gerberding and al. (2005), for the US, see e.g. Walsh (2002).

<sup>22</sup> cf. Borio et al. (2003) for a general statement and Issing (2002) for the view of the ECB.

<sup>23</sup> Considering the case of output gap estimation and following St-Amant and van Norden (1998), Orphanides and van Norden (2005) refer to such estimates as TOFU gaps (Trivial Optimal Filter Unrestricted).

over the forecasting period on the one hand, and to the difference between average future inflation and current inflation on the other hand.

Table 2 presents the results of the baseline forecasting exercises. For each possible dependant variable, the first row of the corresponding sub-Table reports the root mean squared error (RMSE) of the benchmark AR model at each forecasting horizon  $h$ , while the following rows give the ratios of the RMSE of alternative models to the RMSE of the AR model. A given model is credited with some informational content about future inflation when the corresponding RMSE ratio stands below unity. Note that since AR models of either inflation, or GDP growth etc. are probably poor models of these respective variables, this comparison offers only a weak test of the informational content of interest rate gaps estimates for the macroeconomic variables of interest.

*[insert Table 2 about here]*

## 5.2. Forecast evaluation

An interesting issue is to determine whether the improvement in forecast accuracy observed at some point is statistically significant. Several tests of forecast accuracy have been proposed in the literature, among which the popular Diebold and Mariano (1995) DM test. However, the use of the DM test in this context is highly debatable<sup>24</sup>.

First, the distribution of the test statistic is only asymptotically normal. Hence, with a maximum of 26 out-of-sample forecast errors, the true distribution of the test statistic may differ significantly from the asymptotical one (small sample bias)<sup>25</sup>. Second, the use of DM test is justified in the case of non-nested models only, which may not be the case when the augmented regressions as in Equation (4.1) are run against the benchmark AR model<sup>26</sup>. In a recent paper, Clark and McCracken (2005) showed indeed that, for multi-step forecasts and nested models, the asymptotic distributions of the DM test is non-standard and affected by unknown nuisance parameters<sup>27</sup>. Consequently, they suggest alternative tests for nested models, the MSE-F and ENC-F tests. I thus implement the MSE-F test to evaluate the gain in forecast accuracy against the AR benchmark. Since the conditions of application of the asymptotic critical values are clearly rejected due to the small size of the forecast sample, I resort to a bootstrap strategy of the kind proposed by Orphanides and van Norden (2005). The MSE-F test takes the form :

---

<sup>24</sup> See for instance Kunst (2003) for a recent critical assessment of the DM test.

<sup>25</sup> Le Bihan and Sedillot (2000) consider that with 72 observations, the use of asymptotic results is relevant. Orphanides and van Norden (2005) also provide with DM statistics for samples of about 50 observations. However, while focusing on the (simpler) case of one-step ahead forecasts, Clark and McCracken (2005) warn against the use of asymptotical critical values when the ratio of the number of forecasts to the number of in-sample observations is superior to 10% (which would imply in our case IRG and inflation series for the “euro area” beginning in... the mid-1930s).

<sup>26</sup> Even if I allow the lags of the dependant variable and the candidate IRG to differ, they can both be capped at four.

<sup>27</sup> The same holds for the test of forecast encompassing proposed by Harvey, Leybourne and Newbold (1998).

$$MSE - F = P \frac{(MSE_1 - MSE_2)}{MSE_2}$$

Where  $P$  is the number of forecasts (decreasing with the forecast horizon  $h$ ),  $MSE_1$  is the mean squared forecast error of the benchmark (AR) model and  $MSE_2$  the mean squared forecast error of the competing IRG augmented model. The distribution of the statistic under the null assumption of no gain in forecast accuracy (i.e. of equal MSE) is obtained via a bootstrap experiment with 200 replications, as detailed in Appendix C. Since these distributions are non pivotal, the test statistics are estimated anew for each model  $M(Y,X,h)$ , that is for each dependant variable/IRG combination and each forecasting horizon<sup>28</sup>.

When the competing IRG augmented models are assessed against the DSTN benchmark, the forecasting models to be compared are no longer nested, so one can use the DM test. The test statistic is computed as follows:

$$DM = \frac{\bar{d}}{\sqrt{\frac{2\hat{\pi}f(0)}{P}}}$$

where  $\bar{d}$  is the mean of the difference in squared forecast errors between the DSTN and the IRG-augmented models and  $\hat{f}(0)$  is an estimator of its spectral density at frequency zero. I use:

$$2\hat{\pi}f(0) = \hat{\Gamma}_{0,P} + \sum_{j=1}^m \left\{ 1 - \left( \frac{j}{m+1} \right) \right\} \left( \hat{\Gamma}_{j,P} + \hat{\Gamma}'_{j,P} \right)$$

where  $\hat{\Gamma}_{j,P} = (1/P) \sum_{t=j+1}^P (d_t - \bar{d})(d_{t-j} - \bar{d})$  is the estimated auto-covariance of  $d_t$  at lag  $j$ . I chose

$m = 4(P/100)^{(2/9)}$ , so that  $2\hat{\pi}f(0)$  is the standard Newey-West (1987) HAC robust estimator of the long run variance of  $d_t$ .

Nevertheless, as pointed by Orphanides and van Norden (2005), the underlying asymptotic theory of these tests do not allow for changing lags in the forecasting equation during the recursive estimation procedure, nor for changing data sets. Besides, the variables used in the regressions should not be themselves estimated. All these conditions are clearly violated here, so the tests' diagnostics as reported in Tables 2 and 3 should be considered as indicative only.

---

<sup>28</sup> This bootstrap procedure is computationally very intensive: the estimation of the simulated p-values of one panel of Table 2 or 3 requires for instance  $200*3*8*24*16=1,843,200$  regressions.

### 5.3. Results

None of the estimated IRG displays significant leading indicator properties for future inflation (see Tables 2 and 3). However somewhat disappointing from the point of view of monetary policy guidance in practice, this negative result of the out-of-sample experiment could have been largely anticipated, considering both the sign of in-sample correlations and the theoretically only indirect impact of a non-zero IRG on inflation.

Turning to forecast of fluctuations in measures of real activity, the results are more promising, but to a certain extent only. Two of the computed gaps, QT and MR, help to significantly improve forecasts of output growth at horizons longer than one year. Remarkably, the performance of the MR gap in quasi real time is confirmed with real time estimates, although it deteriorates slightly, thus accounting for the impact of GDP revisions on forecast accuracy. However, the examination of Tables 2 and 3 together suggest that none of these two synthetic indicators significantly improves the forecasting performance of a simple AR model when augmented with lagged interest rate changes (DSTN model).

Similarly, according to the results in Table 2, the MR, HP2 and DSTN indicators prove to have a significant predictive content for changes in the rate of unemployment. As for forecasts of output growth, the reduction in RMSE also increases with the forecasting horizon (up to 30% for the MR IRG at six quarters). In contrast however, the comparison with Table 3 indicates a possible informational advantage of the MR gap over the simple change in the nominal interest rate (with cuts RMSE of around 15%, even if the associated simulated p-values of the DM test are greater than 10%).

Finally, the MR gap seems to add some valuable information both to the simple AR and DSTN models of credit growth, even using real time data, at forecasting horizons up to one year ahead.

*[insert Table 3 about here]*

## 6. Robustness checks

Table 4 first presents the outcome of the same out-of-sample exercise over a longer period beginning at the end of 1994 (i.e. the first one-quarter ahead forecast are computed as in 1995Q1), a year that marks the start of Stage II of European and Monetary Union (EMU) with the creation of the former European Monetary Institute (which became the ECB in 1998)<sup>29</sup>. Some of the previous conclusions remain valid. Introducing lags of the MR IRG into an AR model of unemployment and credit growth still leads to a substantial reduction of the projection RMSE at projection horizons from 2 to 6 quarters, but the HP2 and DSTN models perform also relatively well. Besides, the latter and the QT

---

<sup>29</sup> The creation of the EMI makes more plausible, for the purpose of this experiment, the assumption of a policy maker who would be interested in forecasting euro area inflation and growth. Such a choice is not uncommon for studies of the forecasting power of various indicators for key policy variables in the euro area. Another recent example is provided by Nobili (2006).

models are associated with an improved forecast accuracy for GDP growth. In contrast, the gain in forecast accuracy associated with either the BM model for inflation or the MR model for GDP growth vanishes while one extends the out-of-sample period.

Another possible source of sensitivity of the results to the forecasting experimental design is the criterion chosen to select the lag structure used in the forecasting equations (4.1) and (4.4). Therefore, to check the robustness of our results to the consequences of this choice, I repeated the whole experiment using the Schwarz information criterion (SIC) instead of the Akaike criterion (AIC). Table 5 displays the results, for simulations beginning in 1999Q1. The results are qualitatively unchanged, whatever the chosen criterion for lag selection, with a few exceptions. Simple univariate IRG (HP and CF) perform now quite well in inflation models, especially at longer horizons. Conversely, the predictive content of the MR gap for future output growth is not confirmed.

*[insert Tables 4 and 5 about here]*

## **7. Conclusion**

I aim in this paper at assessing the empirical usefulness for the ECB of real interest rate gaps (IRG) estimates that are derived from a range of various techniques: simple univariate statistical filters and multivariate UC models estimated with the Kalman filter, including the semi-structural approach implemented by Mésonnier and Renne (2004) in a companion paper. The techniques used are standard, but their application to real IRG estimates is novel in the literature, in spite of a growing empirical literature on the “natural” rate of interest, in the euro area as well as in the US and other industrialised countries. Indeed, beyond preliminary evidence provided by the computation of in-sample cross correlations between the estimated gaps and macroeconomic variables of interest, the assessment is based on simulations of out-of-sample forecasting experiments, as in e.g. Stock and Watson (1999). In a standard way, the forecasting performance of simple autoregressive models of inflation, GDP growth and other macro variables that are augmented with IRG estimates is compared with the forecasting accuracy of benchmark AR models.

As illustrated by several studies of the reliability of “natural rate” variables in real-time (e.g. Orphanides and van Williams, 2002, Clark and Kozicki, 2004), such simulated experiments should be conducted using real-time data, in order to replicate in a credible way the true situation facing policy makers when they have to meet decisions. I therefore construct such a real time dataset for euro area GDP since the inception of the euro and compute real-time as well as quasi-real-time estimates of the candidate IRG measures. The quasi-real-time IRG series are simply the rolling IRG series estimates that are based on the final data set, while allowing for changes in underlying model parameters with the addition of new data. The difference between quasi and true real-time estimates may matter for IRG estimates obtained from multivariate UC models, which rely in particular on GDP series and are

thus deemed to be sensitive to data revisions. Meanwhile, quasi-real-time IRG estimates obtained applying simple univariate techniques such as the HP filter or band pass filters are assumed to be very close to true real time estimates, since *ex post* real interest rate series are generally subject to minor revisions only.

The results suggest that globally IRG measures are of little help to improve our knowledge of future inflation. In contrast, the semi-structural IRG measure employed in Mésonnier and Renne (2004) has a significant predictive power for unemployment and for credit growth four to six quarters ahead, while some simple detrended interest rate series that are corrected either by a quadratic trend or a smooth HP trend exhibit noticeable forecasting performance for either real GDP growth or unemployment. These results are robust to both changes in the period where the experiment is conducted and the choice of the lag selection technique in the forecasting regressions. Nevertheless, in most cases, the forecasting models that include these estimated interest rate gaps do not outperform a simple AR model augmented with the variations of the nominal interest rate (the DSTN model). One exception remains the apparent predictive power of the MR IRG for future credit growth. However, more work would be necessary to check that this unique positive outcome is not the result of pure chance, as occurs when the selection of a forecasting model relies too heavily on “data snooping”. A proper implementation of the Reality Check proposed by White (2000) should settle that point, but this remains beyond the scope of the present study.

That said, the main results presented here broadly parallel the findings of Orphanides and van Norden (2005) regarding the poor reliability of US inflation forecasts based on output gap estimates in real time. Replacing “output” with “interest rate”, I must conclude as they do that, “notwithstanding the potential usefulness” of *ex post* constructed gaps for historical analysis, “the dubious contribution of real-time measures” of the interest rate gap for forecasting macroeconomic variables of policy interest “brings into question their role in the formulation of reliable real-time policy analysis”. But I would also add that nobody can reasonably expect a single indicator to subsume all the relevant information required by the monetary policy-maker. The poor informational content of interest rate gaps measures in real time should indeed not preclude the integration of relatively simple estimates of the natural rate of interest, such as those derived from semi-structural methods, into the broad-based informational set usually considered by modern central banks in practice.

## References

- Basdevant, O., Björkstén, N., Karagedikli, Ö. (2004). 'Estimating a time-varying neutral real interest rate for New Zealand', *Reserve Bank of New Zealand Discussion Papers*, DP2004/01.
- Baxter, M., King, R.G. (1999). 'Measuring Business Cycles: Approximate Band-Pass Filters for Economic Time Series', *The Review of Economic and Statistics*, Vol. 81, No. 4, pp. 575-593.
- Bentoglio, G., Fayolle, J., Lemoine, M. (2002). 'La croissance européenne perturbée par un cycle de courte période', *Economie et Statistique*, No. 359-360, pp. 83-100.
- Borio, C., English, F., Filardo, A. (2003). 'A tale of two perspectives: old or new challenges for monetary policy', *BIS Working Papers*, No. 127, February.
- Christiano, L.J., Fitzgerald, T.J. (2003). 'The Band Pass Filter', *International Economic Review*, Vol. 44, No. 2, pp. 435-465.
- Clark, T.E., Kozicki, S. (2004). 'Estimating equilibrium real interest rates in real time', *Deutsche Bundesbank Discussion Papers series* No. 32/2004.
- Clark, T.E., McCracken, M.W. (2004). 'The predictive content of the output gap for inflation: resolving in-sample and out-of-sample evidence', mimeo, August.
- Clark, T.E., McCracken, M.W. (2005). 'Evaluating direct multi-step forecasts', *Federal Reserve Bank of Kansas City Working Paper Series*, No. RWP01-14 (revised version: April 2005).
- Cour-Thimann, P., Pilegaard, R., Stracca, L. (2004). 'The output gap and the real interest rate gap in the euro area, 1960-2003', mimeo, European Central Bank, August.
- Crespo Cuaresma, J., Gnan, E., Ritzberger-Gruenwald, D. (2004). 'Searching for the Natural Rate of Interest: a Euro-Area perspective', *Empirica*, Vol. 31, No. 2-3, pp. 185-204.
- Crespo Cuaresma, J., Gnan, E., Ritzberger-Gruenwald, D. (2005). 'The term structure as a predictor of real activity and inflation in the euro area: a reassessment', *Review of World Economics*, Springer Verlag, pp. 318-342.
- Croushore, D., Stark, T. (2001). 'A real-time dataset for macroeconomists', *Journal of Econometrics*, No. 105, November, pp. 111-130.
- Diebold, F.X., Mariano, R.S. (1995). 'Comparing predictive accuracy', *Journal of Business and Economic Statistics*, No. 13, pp. 253-265.
- ECB (2004). 'The Natural real interest rate in the euro area', *European Central Bank Monthly Bulletin*, May.
- Fabiani, S., Mestre, R. (2004). 'A system approach for measuring the Euro area NAIRU', *Empirical Economics*, Vol. 29, No. 2, pp. 311-342.
- Fagan, G., Henry, J., Mestre, R. (2001). 'An Area-Wide Model (AWM) for the Euro Area', *European Central Bank Working Paper*, No. 42.
- Faust, J., Henderson, D.W. (2004). 'Is inflation targeting best-practice monetary policy?', *Federal Reserve Bank of St. Louis Review*, Vol. 86, No. 4, July-August, pp. 117-143.
- Forni, M., Hallin, M., Lippi, M., Reichlin (2003). 'Do financial variables help forecasting inflation and real activity in the euro area?', *Journal of Monetary Economics*, No. 50, pp. 1243-1255.
- Garnier, J., Wilhelmsen, B.-R. (2005). 'The natural real interest rate and the output gap in the euro area: a joint estimation', *European Central Bank Working Paper*, No. 546.
- Gerberding, C., Seitz, F., Worms, A. (2005). 'How the Bundesbank really conducted monetary policy', *North American Journal of Economics and Finance*, Vol. 16, 2005, pp. 277-292.



- Gerlach, S., Smets, F. (1999). 'Output Gaps and Monetary Policy in the EMU area', *European Economic Review*, Vol. 43, pp. 801-812.
- Giammarioli, N., Valla, N. (2003). 'The natural real rate of interest in the euro area', *European Central Bank Working Paper*, No. 233.
- Giammarioli, N., Valla, N. (2004). 'The natural rate of interest and monetary policy: a review', *Journal of Policy Modelling*, Vol. 26, pp. 641-60.
- Harvey, D.I., Leybourne, S.J., Newbold, P. (1998). 'Tests for forecast encompassing', *Journal of Business and Economic Statistics*, Vol. 16, pp. 254-259.
- Hodrick, R.J., Prescott, E.C. (1997). 'Postwar business US cycles: an empirical investigation', *Journal of Money, Credit and Banking*, Vol. 29, February, pp. 1-16.
- Iacobucci, A., Noullez, A. (2005). 'A frequency selective filter for short-length time series', *Computational economics*, Vol. 25, No. 1-2, pp. 75-102.
- Issing, O. (2002). 'Why stable prices and stable markets are important and how they fit together?', Speech at the First Conference of the Monetary Stability Foundation, 5 December 2002, Frankfurt-am-Main.
- Kamada, K. (2005). 'Real-time estimation of the output gap in Japan and its usefulness for inflation forecasting and policymaking', *North American Journal of Economics and Finance*, Vol. 16, pp. 309-332.
- King, R.G., Rebelo, S.T. (1993). 'Low frequency filtering and real business cycles', *Journal of Economic Dynamics and Control*, Vol. 17, January-March, 201-231.
- Kunst, R.M. (2003). 'Testing for relative predictive accuracy: a critical viewpoint', *Institute for Advanced Studies Economic Series*, No. 130, Vienna.
- Larsen, J.D.J. and McKeown, J. (2004). 'The informational content of empirical measures of real interest rate and output gaps for the United Kingdom', *Bank of England Working Paper*, No. 224.
- Laubach, T. (2001). 'Measuring the NAIRU: evidence from seven economies', *The Review of Economics and Statistics*, Vol. 83, No. 2, pp. 218-231.
- Laubach, T., Williams, J.C. (2003). 'Measuring the Natural Rate of Interest', *The Review of Economics and Statistics*, Vol. 85, No. 4, pp. 1063-1070.
- Le Bihan, H., Sédillot, F. (2000). 'Do core inflation measures help forecast inflation ? Out-of-sample evidence from French data', *Economics Letters*, Vol. 69, pp. 261-266.
- Manrique, M., Marqués, J.M. (2004). 'An empirical approximation of the natural rate of interest and potential growth', *Banco de España Documentos de Trabajo* No. 0416.
- Mésonnier, J.S., Renne, J.P. (2004). 'A time-varying « natural » rate of interest for the euro area', *Banque de France Working Paper* No. 115. September.
- Neiss, K.S., Nelson, E. (2003). 'The real interest rate gap as an inflation indicator', *Macroeconomic dynamics*, Vol. 7, pp. 239-262.
- Nicoletti Altimari, S. (2001). 'Does money lead inflation in the euro area ?', *ECB Working Paper* No. 63, May.
- Nobili, A. (2005). 'Forecasting output growth and inflation in the euro area: are financial spreads useful?', *Banca d'Italia Temi di Discussione* No. 544, February.
- Orphanides, A., Van Norden, S. (2002). 'The unreliability of output gap estimates in real time', *The Review of Economics and Statistics*, Vol. 84, No. 4, pp. 569-583.
- Orphanides, A., Van Norden, S. (2005). 'The reliability of inflation forecasts based on output gap estimates in real time', *Journal of Money, Credit and Banking*, Vol. 37, No. 3, pp. 583-601..

- Peersman, G., Smets, F. (1999). 'The Taylor rule, a useful monetary policy benchmark for the Euro area?', *International Finance*, No. 1, pp. 85-116.
- Smets, F., Wouters, R. (2003). 'An estimated stochastic dynamic general equilibrium model of the euro area', *Journal of the European Economic Association*, Vol. 1, No. 5, pp. 1123-1175.
- St-Amant, P., van Norden, S. (1998). 'Measurement of the output gap: a discussion of recent research at the Bank of Canada', *Bank of Canada Technical Report No. 79*.
- Staiger, D., Stock, J., Watson, M. (1997). 'The NAIRU, Unemployment, and Monetary Policy', *Journal of Economic Perspectives*, Vol. 11, pp. 33-49.
- Stock, J.H., Watson, M.W. (1999). 'Forecasting Inflation', *Journal of Monetary Economics*, Vol. 44, pp. 293-335.
- Taylor, M. (1999). 'Real interest rates and macroeconomic activity', *Oxford Review of Economic Policy*, Vol. 15, No. 2, pp. 95-112.
- Walsh, C.E. (2002). 'Speed limit policies: the output gap and optimal monetary policy'. Unpublished manuscript (shorter version available in *American Economic Review*, 93, 1, March 2003, 265-278).
- Weber, A. (2006). 'The role of interest rates in theory and practice – How useful is the concept of natural real rate of interest for monetary policy?', G.L.S. Shackle Memorial Lecture 2006 in Cambridge on 9 March 2006, Deutsche Bundesbank.
- White, H. (2000). 'A reality check for data snooping', *Econometrica*, Vol. 68, No. 5, pp. 1097-1126.
- Wicksell, K. (1898). *Interest and Prices*, London, Macmillan, 1936, translation of the 1898 German edition by R. F. Kahn.
- Wicksell, K. (1907). 'The influence of the rate of interest on prices', *The Economic Journal*, Vol. 17, June, pp. 213-220.
- Woodford, M. (2003). *Interest and Prices*, Princeton, Princeton University Press.

## Appendices

### *Appendix A. Data issues*

The euro area time series for the growth rate of real GDP, unemployment, HICP inflation and for the short term nominal rate of interest cover the period 1979Q1-2004Q4 with quarterly frequency. The first year corresponds to the EMS entering into force. Historical series in levels for the euro area are taken from ECB's AWM database (see Fagan et al., 2000) and have been updated up to the end of 2004 with the official data published by Eurostat and the ECB, as of mid-November 2005. Concretely, Eurostat official data were used over their whole period of availability (i.e. from 1991 Q1 or 1992 Q1 onward) to allow for consistency with common knowledge of the recent economic juncture. These official series were then backdated with the corresponding AWM series. Whereas the national accounts series provided by the AWM database are seasonally adjusted, the historical HICP series is not and I hence preliminarily adjusted it using the Tramo/Seats procedure. The ex post real interest rate series was computed as the nominal interest rate deflated with the current annual rate of inflation.

The historical series for credit flows and outstanding amounts from euro area monetary and financial institutions to the domestic credit sector are provided by the ECB on its website and regularly updated. However, they begin in year 1983 only. Following the methodology reported by the ECB in the statistical annexes of its Monthly bulletin, I computed an index series of outstanding amounts of credit adjusted for changes that do not arise from transactions, with December 2001=100 set as the base period. I calculated then the rate of growth of nominal credit (end of period data) using the index series, that I previously adjusted for seasonal fluctuations. Real credit growth was then computed as nominal growth deflated by HICP inflation. For the sake of consistency of the definitions of growth rates, all three series for GDP, HICP and credit have been turned into logarithms.

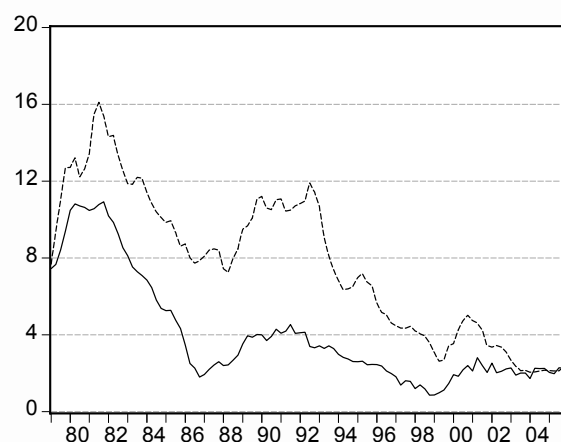
The real time releases of euro area GDP series were taken whenever possible from the EACBN real time database, which covered the release period from January 2001 to August 2005 at the time this paper was written. Real time releases prior to January 2001 were taken from the electronic archives of the Banque de France, and were partly completed when necessary with the information published in the first issues of the ECB's Monthly Bulletin. I gratefully thank the staff of the Economic Database Management Division of the Banque de France for their kind help in retrieving these real-time vintages. Since the released series begin in 1991 at the earliest, I also used the AWM series to backdate them. Note that, in order to accommodate the break consecutive to the entry of Greece into EMU in January 2001, I used for this purpose two different vintages of the AWM GDP series, one anterior to 2001 (as in the first version of the database) and one posterior (as in the first revised version, ending in 2002Q4). Table A.1 provides with the cut-off dates of the releases associated with the different reconstructed GDP vintages that are used in this study.

**Table A.1: description of the real-time database for euro area GDP**

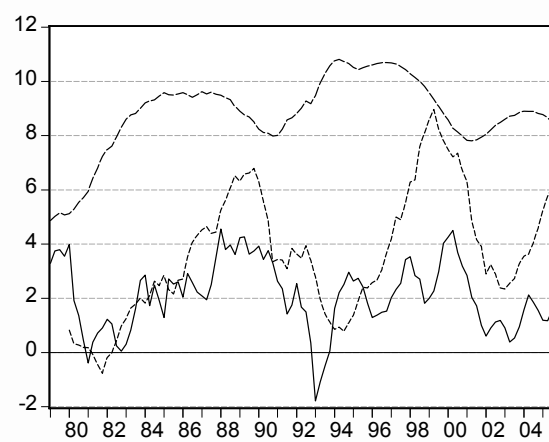
Cut-off date	Observation quarter	Last available quarter
04/03/1999	1999Q1	1998Q4
02/07/1999	1999Q2	1999Q1
06/10/1999	1999Q3	1999Q2
10/12/1999	1999Q4	1999Q3
16/03/2000	2000Q1	1999Q4
09/06/2000	2000Q2	2000Q1
14/09/2000	2000Q3	2000Q2
12/12/2000	2000Q4	2000Q3
10/04/2001	2001Q1	2000Q4
04/07/2001	2001Q2	2001Q1
13/09/2001	2001Q3	2001Q2
05/12/2001	2001Q4	2001Q3
03/04/2002	2002Q1	2001Q4
05/06/2002	2002Q2	2002Q1
11/09/2002	2002Q3	2002Q2
04/12/2002	2002Q4	2002Q3
05/03/2003	2003Q1	2002Q4
04/06/2003	2003Q2	2003Q1
03/09/2003	2003Q3	2003Q2
03/12/2003	2003Q4	2003Q3
31/03/2004	2004Q1	2003Q4
30/06/2004	2004Q2	2004Q1
01/09/2004	2004Q3	2004Q2
01/12/2004	2004Q4	2004Q3
02/03/2005	2005Q1	2004Q4
01/06/2005	2005Q2	2005Q1
05/10/2005	2005Q3	2005Q2
01/12/2005	2005Q4	2005Q3

**Chart A.1: initial data set**

*Annual rates of growth in logs, excepted short term interest rate in %.*

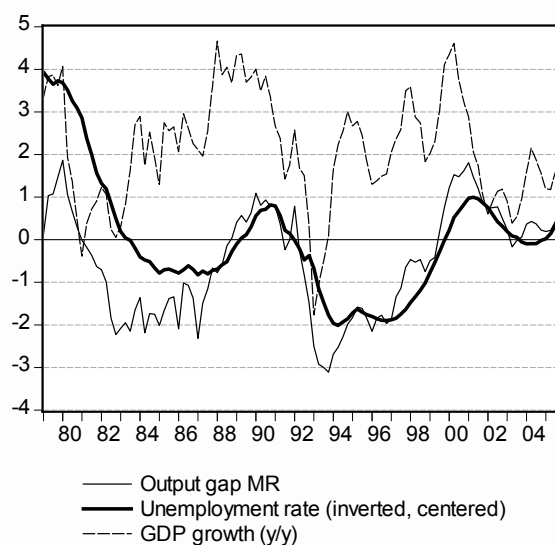


— HICP inflation (y/y)  
 - - - Short term nominal rate of interest (level)



— Real GDP (y/y)  
 - - - Real credit to the private sector (y/y)  
 . . . Unemployment rate (level)

**Chart A.2: rate of unemployment and MR estimate of the output gap**



**Appendix B. Preliminary unit root tests**

**Table B**

Sample 1979-2005			ADF		PP		KPSS
			test	pvalue	test	pvalue	test
PI	+C		-1.12	0.70	-1.43	0.57	0.80
D(PI)	+C		-11.56	0.00	-16.20	0.00	0.07
RR	+C		-0.97	0.76	-0.83	0.81	0.64
D(RR)	+C		-8.93	0.00	-8.94	0.00	0.42
Y	+C		-8.11	0.00	-8.40	0.00	0.09
U	+C		-2.81	0.06	-2.68	0.08	0.39
D(U)	+C		-3.46	0.01	-3.51	0.01	0.43
L	+C		-1.68	0.44	-2.12	0.24	0.43
PI	+C+T		-1.35	0.87	-2.88	0.17	0.21
D(PI)	+C+T		-11.52	0.00	-16.12	0.00	0.07
RR	+C+T		-2.01	0.59	-1.77	0.71	0.30
D(RR)	+C+T		-9.05	0.00	-9.50	0.00	0.08
Y	+C+T		-8.08	0.00	-8.38	0.00	0.08
U	+C+T		-2.31	0.43	-1.99	0.60	0.21
D(U)	+C+T		-4.09	0.01	-4.25	0.01	0.08
L	+C+T		-2.12	0.53	-3.11	0.11	0.08

Legend : PI = quarterly rate of inflation (annualised, in logs), D(PI) = first difference of inflation, RR = real interest rate (ex post, deflated using annual inflation), D(RR) = first difference in RR, Y = quarterly rate of growth of real output (annualised, in logs), U = rate of unemployment (in levels), D(U) = quarterly rate of growth of the rate of unemployment (annualised, in logs), L = quarterly rate of growth of real credit to the private sector (annualised, in logs). Number of lags in ADF and PP automatically adjusted using the AIC.

***Appendix C. Bootstrap methodology for estimation of the probabilities associated with the DM and MSE-F tests statistics***

The distributions of the MSE-F and MSE-T (or DM) statistics presented in Section 5.2 are estimated for each forecast variable/forecasting model combination via a bootstrap experiment (see Clark and McCracken, 2005 and Orphanides and van Norden, 2005, for similar approaches).

In a first step, I estimate a constrained VAR in the forecast variable (e.g. the first difference of HICP inflation) and a candidate IRG estimate (e.g. the final HP1 IRG), under the null assumption that the IRG does not Granger cause the forecast variable. The number of lags in the VAR is selected on an equation-by-equation basis using the AIC, with an allowed maximum of 8. Residuals of the VAR are drawn with replacements and plugged into the estimated VAR, so as to reconstruct 200 simulated datasets of 108 observations each (equivalent to series spanning the period from 1979Q1 to 2005Q4). For each dataset, the first values (up to the required number of lags in the estimated VAR) are taken from historical data, from a randomly chosen date onward.

In a second step, using each simulated pair of series, I perform an out-of-sample forecasting experiment equivalent to the one presented in section 4.1 and store the corresponding test statistics computed for each forecasting horizon.

In the case of the UC models, whose outcome is normally affected by revisions of GDP data, I nevertheless considered the quasi-final version of the IRG as a proxy for the real-time version of the gap because of the difficulty inherent in defining how to bootstrap revisions of the estimated IRG over time.

**Table 1: Cross correlations over 1986-2005, quarterly rates of growth (annualised)**

Period : 1986Q1-2004Q4	k=1	k=2	K=3	k=4	k=5	k=6	k=7	k=8
HICP Inflation (t+k)								
NR	0.63	0.61	0.58	0.54	0.50	0.49	0.45	0.40
RR	0.56	0.56	0.53	0.52	0.50	0.50	0.50	0.49
DSTN	0.14	0.20	0.27	0.26	0.12	0.26	0.31	0.23
IRG QT	0.49	0.50	0.46	0.46	0.43	0.44	0.44	0.43
IRG HP1	0.16	0.16	0.09	0.08	0.04	0.07	0.08	0.09
IRG HP2	0.43	0.43	0.36	0.35	0.31	0.31	0.31	0.30
IRG CF	0.14	0.14	0.07	0.06	0.03	0.05	0.06	0.06
IRG HJ one-sided	-0.05	-0.02	-0.08	-0.07	-0.11	-0.08	-0.06	-0.03
IRG MR one-sided	0.14	0.11	0.02	0.00	-0.03	-0.03	-0.03	-0.02
Real GDP growth (t+k)								
NR	-0.01	-0.05	-0.05	-0.02	-0.01	-0.02	-0.00	0.02
RR	0.03	0.00	0.03	0.07	0.09	0.09	0.09	0.09
DSTN	0.24	-0.04	-0.15	-0.06	0.02	-0.07	-0.16	-0.00
IRG QT	-0.30	-0.36	-0.28	-0.18	-0.13	-0.10	-0.09	-0.08
IRG HP1	-0.35	-0.42	-0.27	-0.11	-0.04	0.01	0.02	0.03
IRG HP2	-0.33	-0.40	-0.30	-0.17	-0.12	-0.09	-0.08	-0.08
IRG CF	-0.31	-0.39	-0.26	-0.12	-0.06	-0.02	-0.01	-0.01
IRG HJ one-sided	-0.07	-0.23	-0.16	-0.03	0.05	0.11	0.15	0.18
IRG MR one-sided	-0.11	-0.08	0.02	0.07	0.18	0.21	0.28	0.30
Rate of unemployment (t+k)								
NR	0.04	0.09	0.15	0.21	0.27	0.34	0.39	0.44
RR	0.12	0.15	0.20	0.24	0.29	0.33	0.36	0.38
DSTN	-0.34	-0.39	-0.39	-0.39	-0.39	-0.34	-0.30	-0.27
IRG QT	-0.54	-0.45	-0.33	-0.22	-0.12	-0.02	0.05	0.11
IRG HP1	-0.31	-0.23	-0.14	-0.06	0.01	0.07	0.08	0.09
IRG HP2	-0.44	-0.35	-0.24	-0.14	-0.04	0.04	0.10	0.14
IRG CF	-0.33	-0.27	-0.19	-0.12	-0.05	-0.01	0.01	0.02
IRG HJ one-sided	-0.12	-0.13	-0.11	-0.09	-0.05	-0.02	-0.03	-0.04
IRG MR one-sided	0.64	0.70	0.76	0.80	0.81	0.81	0.77	0.72
Real credit growth (t+k)								
NR	-0.31	-0.36	-0.40	-0.43	-0.44	-0.46	-0.45	-0.43
RR	-0.23	-0.27	-0.30	-0.33	-0.34	-0.36	-0.37	-0.36
DSTN	0.35	0.26	0.16	0.06	0.07	-0.05	-0.17	-0.09
IRG QT	-0.18	-0.28	-0.36	-0.42	-0.44	-0.48	-0.48	-0.46
IRG HP1	-0.09	-0.19	-0.24	-0.28	-0.26	-0.28	-0.25	-0.20
IRG HP2	-0.19	-0.31	-0.38	-0.44	-0.44	-0.48	-0.47	-0.44
IRG CF	-0.04	-0.15	-0.21	-0.27	-0.26	-0.29	-0.28	-0.25
IRG HJ one-sided	0.20	0.14	0.12	0.08	0.12	0.11	0.14	0.22
IRG MR one-sided	-0.45	-0.43	-0.36	-0.30	-0.21	-0.13	-0.04	0.07

Legend : NR = nominal rate (short), RR = ex post real rate (short, deflated by current annual HICP inflation), IRG QT = real rate corrected with quadratic trend, IRG HP1 = HP (1,600) filtered IRG, IRG HP2 = HP (26,500) filtered IRG, IRG CF = Christiano-Fitzgerald (1999) filtered IRG, IRG HJ = Harvey-Jaeger UC model, IRG MR = baseline IRG using the UC model as in Mésonnier and Renne (2004).

**Table 2: predictive power of different measures of the real IRG for inflation, real activity and credit growth in real time – Forecast sample: 1999Q1-2005Q4 – Lag selection using the Akaike information criterion**

Ratios of RMSE of competing bivariate models to RMSE of the benchmark AR model

Model	H=2	<i>pvalue</i>	H=4	<i>pvalue</i>	H=6	<i>pvalue</i>
Inflation						
<i>AR</i>	<i>1.049</i>		<i>0.910</i>		<i>0.930</i>	
HJ quasi real time	1.012	<i>0.560</i>	0.992	<i>0.225</i>	1.000	<i>0.350</i>
MR quasi real time	1.023	<i>0.680</i>	1.008	<i>0.405</i>	0.965	<i>0.140</i>
QT	1.040	<i>0.830</i>	1.057	<i>0.765</i>	1.097	<i>0.835</i>
HP1	1.011	<i>0.550</i>	0.999	<i>0.290</i>	1.014	<i>0.545</i>
HP2	1.006	<i>0.405</i>	0.985	<i>0.155</i>	0.997	<i>0.280</i>
CF	1.001	<i>0.320</i>	0.988	<i>0.235</i>	0.994	<i>0.300</i>
HJ	1.008	<i>0.490</i>	0.991	<i>0.225</i>	1.002	<i>0.365</i>
MR	1.021	<i>0.650</i>	1.007	<i>0.405</i>	0.961	<i>0.125</i>
DSTN	0.990	<i>0.080</i>	0.961	<i>0.090</i>	0.969	<i>0.165</i>
Real GDP growth						
<i>AR</i>	<i>1.294</i>		<i>1.146</i>		<i>1.012</i>	
HJ quasi real time	0.978	<i>0.145</i>	0.965	<i>0.130</i>	1.022	<i>0.655</i>
MR quasi real time	1.179	<i>0.960</i>	0.977	<i>0.190</i>	0.811	<b>0.030</b>
QT	0.983	<i>0.220</i>	0.897	<b>0.030</b>	0.840	<b>0.030</b>
HP1	1.036	<i>0.695</i>	1.030	<i>0.640</i>	1.017	<i>0.580</i>
HP2	0.928	<i>0.060</i>	0.937	<i>0.095</i>	0.961	<i>0.180</i>
CF	1.086	<i>0.855</i>	1.094	<i>0.840</i>	1.071	<i>0.780</i>
HJ	0.973	<i>0.125</i>	0.952	<i>0.115</i>	1.019	<i>0.630</i>
MR	1.218	<i>0.970</i>	1.056	<i>0.645</i>	0.907	<i>0.085</i>
DSTN	0.909	<b>0.010</b>	0.906	<b>0.000</b>	0.926	<b>0.035</b>
Unemployment rate						
<i>AR</i>	<i>4.672</i>		<i>5.015</i>		<i>5.643</i>	
HJ quasi real time	0.978	<i>0.160</i>	1.012	<i>0.485</i>	0.942	<i>0.085</i>
MR quasi real time	0.858	<b>0.005</b>	0.769	<b>0.005</b>	0.696	<b>0.005</b>
QT	1.146	<i>0.950</i>	1.128	<i>0.825</i>	1.016	<i>0.440</i>
HP1	0.983	<i>0.190</i>	0.972	<i>0.150</i>	0.915	<b>0.040</b>
HP2	0.884	<b>0.030</b>	0.890	<b>0.050</b>	0.865	<b>0.035</b>
CF	0.954	<i>0.100</i>	0.955	<i>0.150</i>	0.916	<i>0.065</i>
HJ	0.981	<i>0.175</i>	1.005	<i>0.375</i>	0.941	<i>0.085</i>
MR	0.860	<b>0.005</b>	0.778	<b>0.005</b>	0.705	<b>0.005</b>
DSTN	0.964	<i>0.110</i>	0.895	<b>0.020</b>	0.815	<b>0.000</b>
Nb of forecasts	26		24		22	

Notes : the entries in italics show the RMSE of the AR forecast, other entries show the ratio of the RMSE of forecasts based on the method specified to the RMSE of the AR forecast. Hence, a ratio below unity denotes an improvement in forecast accuracy. The p-values correspond to the empirical distributions of the two-sided MSE-F test of Clark and McCracken (2005), as obtained by bootstrap. A probability close to zero is indicative of a significant difference in the RMSE. QT = real rate corrected with quadratic trend, HP1 = HP (1,600) filtered IRG, HP2 = HP (26,500) filtered IRG, CF = Christiano-Fitzgerald (1999) filtered IRG, HJ = Harvey-Jaeger UC model, MR = baseline IRG using the UC model as in Mésonnier and Renne (2004), DSTN = first difference in the short term nominal rate of interest.



**Table 2 (continued)**

Ratios of RMSE of competing bivariate models to RMSE of the benchmark AR model

Model	H=2	<i>pvalue</i>	H=4	<i>pvalue</i>	H=6	<i>Pvalue</i>
Real credit growth						
<i>AR</i>	<i>1.405</i>		<i>1.501</i>		<i>1.481</i>	
HJ quasi real time	1.000	<i>0.365</i>	1.019	<i>0.500</i>	0.998	<i>0.355</i>
MR quasi real time	0.933	<i>0.120</i>	0.897	<i>0.095</i>	0.976	<i>0.270</i>
QT	0.977	<i>0.235</i>	0.993	<i>0.295</i>	0.986	<i>0.280</i>
HP1	0.946	<i>0.105</i>	0.973	<i>0.185</i>	1.008	<i>0.510</i>
HP2	0.969	<i>0.215</i>	0.995	<i>0.355</i>	1.095	<i>0.800</i>
CF	0.933	<i>0.080</i>	0.971	<i>0.210</i>	1.006	<i>0.495</i>
HJ	1.002	<i>0.385</i>	1.035	<i>0.605</i>	0.999	<i>0.370</i>
MR	0.913	<i>0.090</i>	0.876	<i>0.070</i>	0.942	<i>0.185</i>
DSTN	1.018	<i>0.605</i>	0.990	<i>0.230</i>	1.038	<i>0.765</i>
Nb of forecasts	26		24		22	

Notes : the entries in italics show the RMSE of the AR forecast, other entries show the ratio of the RMSE of forecasts based on the method specified to the RMSE of the AR forecast. Hence, a ratio below unity denotes an improvement in forecast accuracy.. The p-values correspond to the empirical distributions of the two-sided MSE-F test of Clark and McCracken (2005), as obtained by bootstrap. A probability close to zero is indicative of a significant difference in the RMSE. QT = real rate corrected with quadratic trend, HP1 = HP (1600) filtered IRG, HP2 = HP (7000) filtered IRG, CF = Christiano-Fitzgerald (1999) filtered IRG, HJ = Harvey-Jaeger UC model, MR = baseline IRG using the UC model as in Mésonnier and Renne (2004), DSTN = first difference in the short term nominal rate of interest.

**Table 3: predictive power of different measures of the real IRG for inflation, real activity and credit growth in real time – Forecast sample: 1999Q1-2005Q4 – Lag selection using the Akaike information criterion**

Ratios of RMSE of competing bivariate models to RMSE of the DSTN model

Model	H=2	<i>pvalue</i>	H=4	<i>pvalue</i>	H=6	<i>pvalue</i>
Inflation						
<i>DSTN</i>	<i>1.039</i>		<i>0.875</i>		<i>0.901</i>	
HJ quasi real time	1.022	<i>0.960</i>	1.032	<i>0.900</i>	1.032	<i>0.870</i>
MR quasi real time	1.033	<i>0.835</i>	1.049	<i>0.610</i>	0.996	<i>0.440</i>
QT	1.050	<i>0.980</i>	1.100	<i>0.980</i>	1.132	<i>0.980</i>
HP1	1.021	<i>0.865</i>	1.040	<i>0.880</i>	1.047	<i>0.850</i>
HP2	1.015	<i>0.825</i>	1.026	<i>0.780</i>	1.029	<i>0.845</i>
CF	1.010	<i>0.645</i>	1.028	<i>0.850</i>	1.026	<i>0.755</i>
HJRT	1.017	<i>0.900</i>	1.032	<i>0.890</i>	1.034	<i>0.850</i>
MRRT	1.031	<i>0.845</i>	1.048	<i>0.630</i>	0.992	<i>0.415</i>
Real GDP growth						
<i>DSTN</i>	<i>1.177</i>		<i>1.039</i>		<i>0.937</i>	
HJ quasi real time	1.075	<i>0.895</i>	1.064	<i>0.815</i>	1.104	<i>0.840</i>
MR quasi real time	1.296	<i>0.955</i>	1.078	<i>0.750</i>	0.876	<i>0.085</i>
QT	1.081	<i>0.655</i>	0.989	<i>0.420</i>	0.908	<i>0.305</i>
HP1	1.139	<i>0.955</i>	1.137	<i>0.935</i>	1.099	<i>0.990</i>
HP2	1.020	<i>0.720</i>	1.034	<i>0.840</i>	1.038	<i>0.805</i>
CF	1.194	<i>0.995</i>	1.207	<i>1.000</i>	1.157	<i>1.000</i>
HJRT	1.070	<i>0.895</i>	1.051	<i>0.735</i>	1.100	<i>0.850</i>
MRRT	1.339	<i>0.975</i>	1.165	<i>0.975</i>	0.980	<i>0.385</i>
Unemployment rate						
<i>DSTN</i>	<i>4.505</i>		<i>4.490</i>		<i>4.597</i>	
HJ quasi real time	1.014	<i>0.590</i>	1.130	<i>0.835</i>	1.156	<i>0.855</i>
MR quasi real time	0.890	<i>0.105</i>	0.859	<i>0.145</i>	0.854	<i>0.195</i>
QT	1.189	<i>0.740</i>	1.260	<i>0.705</i>	1.247	<i>0.655</i>
HP1	1.019	<i>0.530</i>	1.085	<i>0.690</i>	1.124	<i>0.755</i>
HP2	0.916	<i>0.215</i>	0.995	<i>0.375</i>	1.062	<i>0.520</i>
CF	0.989	<i>0.485</i>	1.067	<i>0.625</i>	1.125	<i>0.755</i>
HJRT	1.018	<i>0.595</i>	1.123	<i>0.815</i>	1.155	<i>0.855</i>
MRRT	0.892	<i>0.105</i>	0.869	<i>0.155</i>	0.866	<i>0.180</i>
Real credit growth						
<i>DSTN</i>	<i>1.431</i>		<i>1.486</i>		<i>1.538</i>	
HJ quasi real time	0.982	<i>0.180</i>	1.029	<i>0.610</i>	0.961	<i>0.305</i>
MR quasi real time	0.916	<i>0.090</i>	0.907	<i>0.085</i>	0.940	<i>.145</i>
QT	0.959	<i>0.325</i>	1.004	<i>0.415</i>	0.950	<i>0.365</i>
HP1	0.929	<b><i>0.025</i></b>	0.983	<i>0.335</i>	0.971	<i>0.350</i>
HP2	0.952	<i>0.095</i>	1.006	<i>0.540</i>	1.054	<i>0.740</i>
CF	0.916	<b><i>0.005</i></b>	0.981	<i>0.395</i>	0.969	<i>0.400</i>
HJRT	0.984	<i>0.200</i>	1.046	<i>0.675</i>	0.963	<i>0.320</i>
MRRT	0.896	<i>0.070</i>	0.885	<i>0.060</i>	0.908	<i>0.080</i>
Nb of forecasts	26		24		22	

Notes : the entries in italics show the RMSE of the DSTN forecast, other entries show the ratio of the RMSE of forecasts based on the method specified to the RMSE of the AR forecast. Hence, a ratio below unity denotes an improvement in forecast accuracy. The p-values correspond to the empirical distributions of the DM test of Diebold and Mariano (1995), as obtained by bootstrap. A probability close to zero is indicative of a significant difference in the RMSE. QT = real rate corrected with quadratic trend, HP1 = HP (1,600) filtered IRG, HP2 = HP (26,500) filtered IRG, CF = Christiano-Fitzgerald (1999) filtered IRG, HJ = Harvey-Jaeger UC model, MR = baseline IRG using the UC model as in Mésonnier and Renne (2004), DSTN = first difference in the short term nominal rate of interest.

**Table 4: predictive power of different measures of the real IRG for inflation, real activity and credit growth - Forecast sample: 1995Q1-2005Q4 – Lag selection using the Akaike information criterion**

Ratios of RMSE of competing bivariate models to RMSE of the benchmark AR model

Model	H=2	H=4	H=6	H=2	H=4	H=6	H=2	H=4	H=6	H=2	H=4	H=6
	Inflation			GDP growth			Unemployment			Credit growth		
<i>AR</i>	<i>0.917</i>	<i>0.803</i>	<i>0.832</i>	<i>1.207</i>	<i>1.061</i>	<i>0.967</i>	<i>4.485</i>	<i>5.219</i>	<i>6.131</i>	<i>1.470</i>	<i>1.705</i>	<i>1.847</i>
QT	1.022	1.029	1.061	0.986	0.955	0.913	1.157	1.125	1.034	1.007	1.004	0.996
HP1	0.998	0.985	1.002	1.006	1.022	0.997	1.050	1.048	0.989	0.995	1.011	1.041
HP2	1.007	0.969	0.972	0.957	0.942	0.939	0.902	0.868	0.863	0.897	0.891	0.927
CF	0.990	0.969	0.976	1.061	1.069	1.025	0.988	0.977	0.928	0.951	0.964	0.987
HJ quasi real time	0.997	0.972	0.977	0.987	0.974	0.957	0.993	1.025	0.974	1.011	1.018	1.019
MR quasi real time	1.013	0.990	0.936	1.121	1.205	1.042	0.855	0.789	0.747	0.932	0.899	0.931
DSTN	0.979	0.946	0.942	0.964	0.938	0.928	0.920	0.856	0.800	1.004	0.969	0.986

Notes : the entries in italics show the RMSE of the AR forecast, other entries show the ratio of the RMSE of forecasts based on the method specified to the RMSE of the AR forecast. Hence, a ratio below unity denotes an improvement in forecast accuracy. QT = real rate corrected with quadratic trend, HP1 = HP (1,600) filtered IRG, HP2 = HP (26,500) filtered IRG, CF = Christiano-Fitzgerald (1999) filtered IRG, HJ = Harvey-Jaeger UC model, MR = baseline IRG using the UC model as in Mésonnier and Renne (2004), DSTN = first difference in the short term nominal rate of interest.

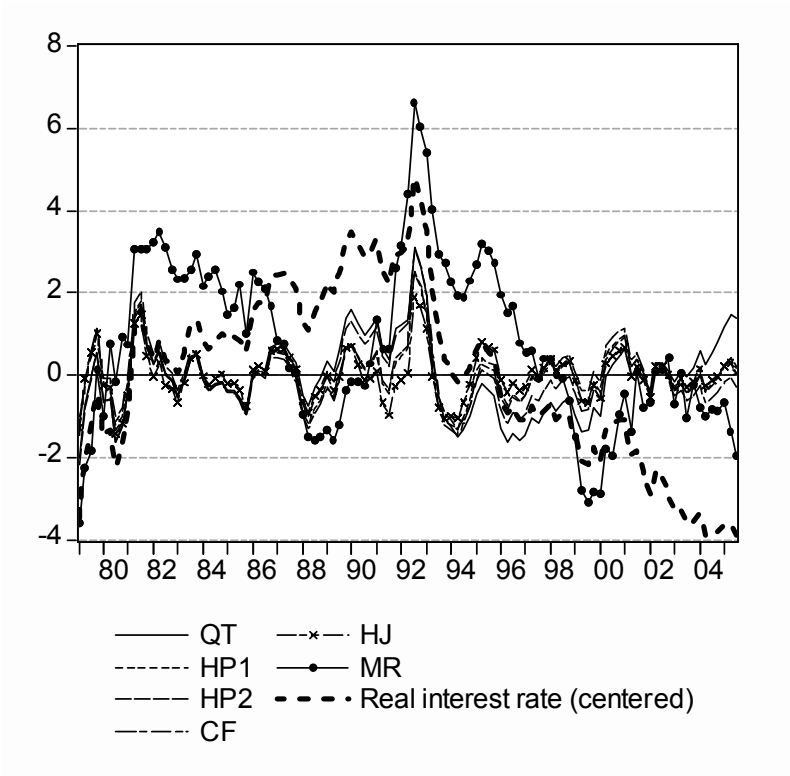
**Table 5: predictive power of different measures of the real IRG for inflation, real activity and credit growth - Forecast sample: 1999Q1-2005Q4 – Lag selection using the Schwarz information criterion**

Ratios of RMSE of competing bivariate models to RMSE of the benchmark AR model

Model	H=2	H=4	H=6	H=2	H=4	H=6	H=2	H=4	H=6	H=2	H=4	H=6
	Inflation			GDP growth			Unemployment			Credit growth		
<i>AR</i>	<i>1.098</i>	<i>0.975</i>	<i>1.014</i>	<i>1.285</i>	<i>1.146</i>	<i>1.012</i>	<i>4.507</i>	<i>5.015</i>	<i>5.303</i>	<i>1.389</i>	<i>1.543</i>	<i>1.645</i>
HJ quasi real time	0.952	0.926	0.906	0.991	0.994	1.046	0.998	0.965	0.967	1.012	1.023	1.023
MR quasi real time	1.005	0.987	0.987	1.293	1.169	1.024	0.908	0.769	0.740	0.927	0.877	0.910
QT	0.990	0.987	0.999	0.979	0.897	0.825	1.197	1.131	1.108	0.988	0.973	0.944
HP1	0.957	0.932	0.925	1.042	1.030	1.011	1.016	0.959	0.951	0.957	0.950	0.958
HP2	0.947	0.922	0.916	0.924	0.938	0.957	0.916	0.885	0.945	0.970	0.972	1.000
CF	0.947	0.921	0.905	1.104	1.094	1.061	0.962	0.936	0.945	0.948	0.945	0.968
HJ	0.953	0.926	0.908	0.982	0.988	1.049	1.000	0.963	0.966	1.013	1.025	1.035
MR	0.989	0.967	0.960	1.325	1.246	1.114	0.911	0.778	0.739	0.917	0.866	0.873
DSTN	0.946	0.897	0.877	0.938	0.976	0.957	1.000	0.846	0.798	1.029	1.023	0.985
Nb of forecast	26	24	22	26	24	22	26	24	22	26	24	22

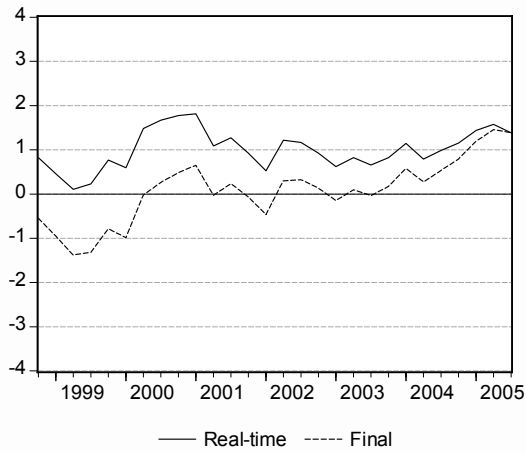
Notes : the entries in italics show the RMSE of the AR forecast, other entries show the ratio of the RMSE of forecasts based on the method specified to the RMSE of the AR forecast. Hence, a ratio below unity denotes an improvement in forecast accuracy. QT = real rate corrected with quadratic trend, HP1 = HP (1,600) filtered IRG, HP2 = HP (26,500) filtered IRG, CF = Christiano-Fitzgerald (1999) filtered IRG, HJ = Harvey-Jaeger UC model, MR = baseline IRG using the UC model as in Mésonnier and Renne (2004), DSTN = first difference in the short term nominal rate of interest.

Chart 1: Alternative measures of the real interest rate gap for the euro area over the whole sample (1979-2005)

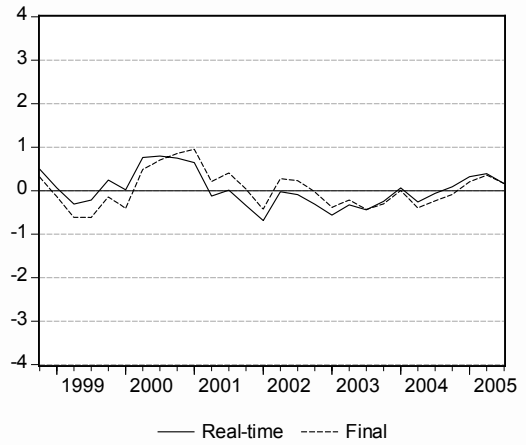


**Chart 2: Quasi-real time and final end-of-sample estimates of the interest rate gap**

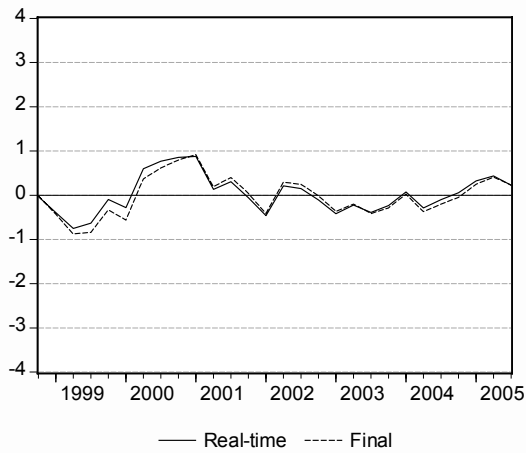
Quadratic trend



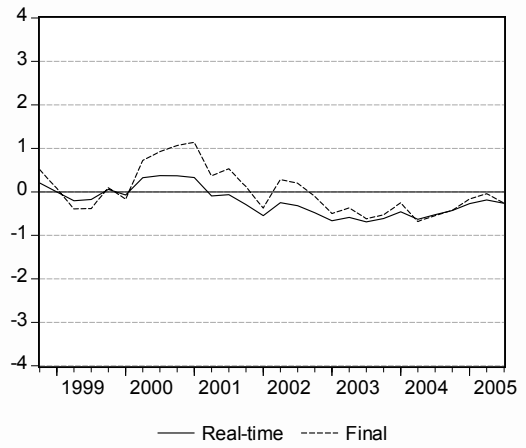
HP filter (lambda=1,600)



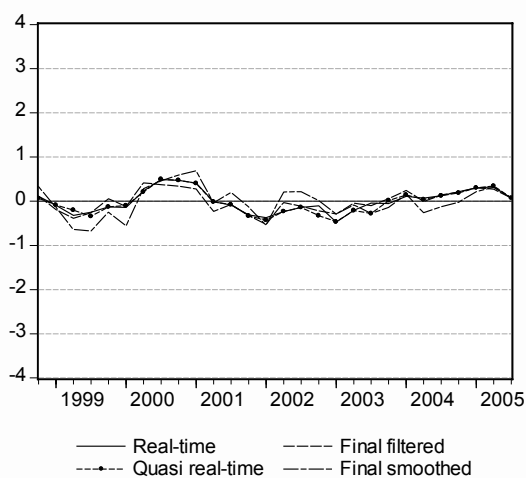
HP filter (lambda=26,500)



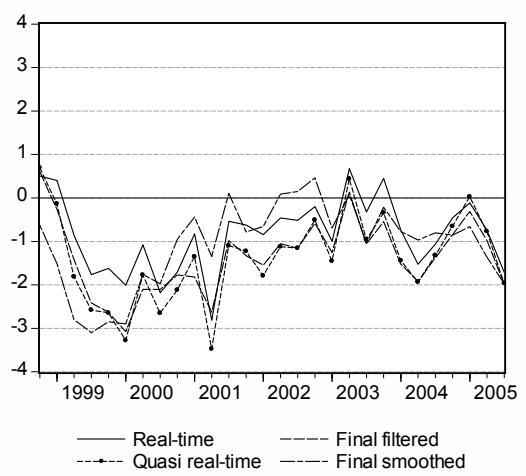
Christiano-Fitzgerald asymmetric band-pass filter



Harvey-Jaeger UC model



Mésonnier-Renne semi-structural UC model



## Notes d'Études et de Recherche

1. C. Huang and H. Pagès, "Optimal Consumption and Portfolio Policies with an Infinite Horizon: Existence and Convergence," May 1990.
2. C. Bordes, « Variabilité de la vitesse et volatilité de la croissance monétaire : le cas français », février 1989.
3. C. Bordes, M. Driscoll and A. Sauviat, "Interpreting the Money-Output Correlation: Money-Real or Real-Real?," May 1989.
4. C. Bordes, D. Goyeau et A. Sauviat, « Taux d'intérêt, marge et rentabilité bancaires : le cas des pays de l'OCDE », mai 1989.
5. B. Bensaïd, S. Federbusch et R. Gary-Bobo, « Sur quelques propriétés stratégiques de l'intéressement des salariés dans l'industrie », juin 1989.
6. O. De Bandt, « L'identification des chocs monétaires et financiers en France : une étude empirique », juin 1990.
7. M. Boutillier et S. Dérangère, « Le taux de crédit accordé aux entreprises françaises : coûts opératoires des banques et prime de risque de défaut », juin 1990.
8. M. Boutillier and B. Cabrillac, "Foreign Exchange Markets: Efficiency and Hierarchy," October 1990.
9. O. De Bandt et P. Jacquinet, « Les choix de financement des entreprises en France : une modélisation économétrique », octobre 1990 (English version also available on request).
10. B. Bensaïd and R. Gary-Bobo, "On Renegotiation of Profit-Sharing Contracts in Industry," July 1989 (English version of NER n° 5).
11. P. G. Garella and Y. Richelle, "Cartel Formation and the Selection of Firms," December 1990.
12. H. Pagès and H. He, "Consumption and Portfolio Decisions with Labor Income and Borrowing Constraints," August 1990.
13. P. Sicsic, « Le franc Poincaré a-t-il été délibérément sous-évalué ? », octobre 1991.
14. B. Bensaïd and R. Gary-Bobo, "On the Commitment Value of Contracts under Renegotiation Constraints," January 1990 revised November 1990.
15. B. Bensaïd, J.-P. Lesne, H. Pagès and J. Scheinkman, "Derivative Asset Pricing with Transaction Costs," May 1991 revised November 1991.
16. C. Monticelli and M.-O. Strauss-Kahn, "European Integration and the Demand for Broad Money," December 1991.
17. J. Henry and M. Phelipot, "The High and Low-Risk Asset Demand of French Households: A Multivariate Analysis," November 1991 revised June 1992.
18. B. Bensaïd and P. Garella, "Financing Takeovers under Asymmetric Information," September 1992.

19. A. de Palma and M. Uctum, "Financial Intermediation under Financial Integration and Deregulation," September 1992.
20. A. de Palma, L. Leruth and P. Régibeau, "Partial Compatibility with Network Externalities and Double Purchase," August 1992.
21. A. Frachot, D. Janci and V. Lacoste, "Factor Analysis of the Term Structure: a Probabilistic Approach," November 1992.
22. P. Sicsic et B. Villeneuve, « L'afflux d'or en France de 1928 à 1934 », janvier 1993.
23. M. Jeanblanc-Picqué and R. Avesani, "Impulse Control Method and Exchange Rate," September 1993.
24. A. Frachot and J.-P. Lesne, "Expectations Hypothesis and Stochastic Volatilities," July 1993 revised September 1993.
25. B. Bensaid and A. de Palma, "Spatial Multiproduct Oligopoly," February 1993 revised October 1994.
26. A. de Palma and R. Gary-Bobo, "Credit Contraction in a Model of the Banking Industry," October 1994.
27. P. Jacquinet et F. Mihoubi, « Dynamique et hétérogénéité de l'emploi en déséquilibre », septembre 1995.
28. G. Salmat, « Le retournement conjoncturel de 1992 et 1993 en France : une modélisation VAR », octobre 1994.
29. J. Henry and J. Weidmann, "Asymmetry in the EMS Revisited: Evidence from the Causality Analysis of Daily Eurorates," February 1994 revised October 1994.
30. O. De Bandt, "Competition Among Financial Intermediaries and the Risk of Contagious Failures," September 1994 revised January 1995.
31. B. Bensaid et A. de Palma, « Politique monétaire et concurrence bancaire », janvier 1994 révisé en septembre 1995.
32. F. Rosenwald, « Coût du crédit et montant des prêts : une interprétation en terme de canal large du crédit », septembre 1995.
33. G. Cette et S. Mahfouz, « Le partage primaire du revenu : constat descriptif sur longue période », décembre 1995.
34. H. Pagès, "Is there a Premium for Currencies Correlated with Volatility? Some Evidence from Risk Reversals," January 1996.
35. E. Jondeau and R. Ricart, "The Expectations Theory: Tests on French, German and American Euro-rates," June 1996.
36. B. Bensaid et O. De Bandt, « Les stratégies "stop-loss" : théorie et application au Contrat Notionnel du Matif », juin 1996.
37. C. Martin et F. Rosenwald, « Le marché des certificats de dépôts. Écarts de taux à l'émission : l'influence de la relation émetteurs-souscripteurs initiaux », avril 1996.

38. Banque de France - CEPREMAP - Direction de la Prévision - Erasme - INSEE - OFCE, « Structures et propriétés de cinq modèles macroéconomiques français », juin 1996.
39. F. Rosenwald, « L'influence des montants émis sur le taux des certificats de dépôts », octobre 1996.
40. L. Baumel, « Les crédits mis en place par les banques AFB de 1978 à 1992 : une évaluation des montants et des durées initiales », novembre 1996.
41. G. Cette et E. Kremp, « Le passage à une assiette valeur ajoutée pour les cotisations sociales : Une caractérisation des entreprises non financières “gagnantes” et “perdantes” », novembre 1996.
42. S. Avouyi-Dovi, E. Jondeau et C. Lai Tong, « Effets “volume”, volatilité et transmissions internationales sur les marchés boursiers dans le G5 », avril 1997.
43. E. Jondeau et R. Ricart, « Le contenu en information de la pente des taux : Application au cas des titres publics français », juin 1997.
44. B. Bensaid et M. Boutillier, « Le contrat notionnel : efficacité et efficacie », juillet 1997.
45. E. Jondeau et R. Ricart, « La théorie des anticipations de la structure par terme : test à partir des titres publics français », septembre 1997.
46. E. Jondeau, « Représentation VAR et test de la théorie des anticipations de la structure par terme », septembre 1997.
47. E. Jondeau et M. Rockinger, « Estimation et interprétation des densités neutres au risque : Une comparaison de méthodes », octobre 1997.
48. L. Baumel et P. Sevestre, « La relation entre le taux de crédits et le coût des ressources bancaires. Modélisation et estimation sur données individuelles de banques », octobre 1997.
49. P. Sevestre, “On the Use of Banks Balance Sheet Data in Loan Market Studies : A Note,” October 1997.
50. P.-C. Hautcoeur and P. Sicsic, “Threat of a Capital Levy, Expected Devaluation and Interest Rates in France during the Interwar Period,” January 1998.
51. P. Jacquinot, « L'inflation sous-jacente à partir d'une approche structurelle des VAR : une application à la France, à l'Allemagne et au Royaume-Uni », janvier 1998.
52. C. Bruneau et O. De Bandt, « La modélisation VAR structurel : application à la politique monétaire en France », janvier 1998.
53. C. Bruneau and E. Jondeau, “Long-Run Causality, with an Application to International Links between Long-Term Interest Rates,” June 1998.
54. S. Coutant, E. Jondeau and M. Rockinger, “Reading Interest Rate and Bond Futures Options' Smiles: How PIBOR and Notional Operators Appreciated the 1997 French Snap Election,” June 1998.
55. E. Jondeau et F. Sédillot, « La prévision des taux longs français et allemands à partir d'un modèle à anticipations rationnelles », juin 1998.



56. E. Jondeau and M. Rockinger, "Estimating Gram-Charlier Expansions with Positivity Constraints," January 1999.
57. S. Avouyi-Dovi and E. Jondeau, "Interest Rate Transmission and Volatility Transmission along the Yield Curve," January 1999.
58. S. Avouyi-Dovi et E. Jondeau, « La modélisation de la volatilité des bourses asiatiques », janvier 1999.
59. E. Jondeau, « La mesure du ratio rendement-risque à partir du marché des euro-devises », janvier 1999.
60. C. Bruneau and O. De Bandt, "Fiscal Policy in the Transition to Monetary Union: A Structural VAR Model," January 1999.
61. E. Jondeau and R. Ricart, "The Information Content of the French and German Government Bond Yield Curves: Why Such Differences?," February 1999.
62. J.-B. Chatelain et P. Sevestre, « Coûts et bénéfices du passage d'une faible inflation à la stabilité des prix », février 1999.
63. D. Irac et P. Jacquinot, « L'investissement en France depuis le début des années 1980 », avril 1999.
64. F. Mihoubi, « Le partage de la valeur ajoutée en France et en Allemagne », mars 1999.
65. S. Avouyi-Dovi and E. Jondeau, "Modelling the French Swap Spread," April 1999.
66. E. Jondeau and M. Rockinger, "The Tail Behavior of Stock Returns: Emerging Versus Mature Markets," June 1999.
67. F. Sédillot, « La pente des taux contient-elle de l'information sur l'activité économique future ? », juin 1999.
68. E. Jondeau, H. Le Bihan et F. Sédillot, « Modélisation et prévision des indices de prix sectoriels », septembre 1999.
69. H. Le Bihan and F. Sédillot, "Implementing and Interpreting Indicators of Core Inflation: The French Case," September 1999.
70. R. Lacroix, "Testing for Zeros in the Spectrum of an Univariate Stationary Process: Part I," December 1999.
71. R. Lacroix, "Testing for Zeros in the Spectrum of an Univariate Stationary Process: Part II," December 1999.
72. R. Lacroix, "Testing the Null Hypothesis of Stationarity in Fractionally Integrated Models," December 1999.
73. F. Chesnay and E. Jondeau, "Does correlation between stock returns really increase during turbulent period?," April 2000.
74. O. Burkart and V. Coudert, "Leading Indicators of Currency Crises in Emerging Economies," May 2000.
75. D. Irac, "Estimation of a Time Varying NAIRU for France," July 2000.

76. E. Jondeau and H. Le Bihan, "Evaluating Monetary Policy Rules in Estimated Forward-Looking Models: A Comparison of US and German Monetary Policies," October 2000.
77. E. Jondeau and M. Rockinger, "Conditional Volatility, Skewness, and Kurtosis: Existence and Persistence," November 2000.
78. P. Jacquinot et F. Mihoubi, « Modèle à Anticipations Rationnelles de la CONjoncture Simulée : MARCOS », novembre 2000.
79. M. Rockinger and E. Jondeau, "Entropy Densities: With an Application to Autoregressive Conditional Skewness and Kurtosis," January 2001.
80. B. Amable and J.-B. Chatelain, "Can Financial Infrastructures Foster Economic Development?," January 2001.
81. J.-B. Chatelain and J.-C. Teurlai, "Pitfalls in Investment Euler Equations," January 2001.
82. M. Rockinger and E. Jondeau, "Conditional Dependency of Financial Series: An Application of Copulas," February 2001.
83. C. Florens, E. Jondeau and H. Le Bihan, "Assessing GMM Estimates of the Federal Reserve Reaction Function," March 2001.
84. J.-B. Chatelain, "Mark-up and Capital Structure of the Firm facing Uncertainty," June 2001.
85. B. Amable, J.-B. Chatelain and O. De Bandt, "Optimal Capacity in the Banking Sector and Economic Growth," June 2001.
86. E. Jondeau and H. Le Bihan, "Testing for a Forward-Looking Phillips Curve. Additional Evidence from European and US Data," December 2001.
87. G. Clette, J. Mairesse et Y. Kocoglu, « Croissance économique et diffusion des TIC : le cas de la France sur longue période (1980-2000) », décembre 2001.
88. D. Irac and F. Sédillot, "Short Run Assessment of French Economic Activity Using OPTIM," January 2002.
89. M. Baghli, C. Bouthevillain, O. de Bandt, H. Fraisse, H. Le Bihan et Ph. Rousseaux, « PIB potentiel et écart de PIB : quelques évaluations pour la France », juillet 2002.
90. E. Jondeau and M. Rockinger, "Asset Allocation in Transition Economies," October 2002.
91. H. Pagès and J.A.C. Santos, "Optimal Supervisory Policies and Depositor-Preferences Laws," October 2002.
92. C. Loupias, F. Savignac and P. Sevestre, "Is There a Bank Lending Channel in France? Evidence from Bank Panel Data," November 2002.
93. M. Ehrmann, L. Gambacorta, J. Martínez-Pagés, P. Sevestre and A. Worms, "Financial Systems and The Role in Monetary Policy Transmission in the Euro Area," November 2002.
94. S. Avouyi-Dovi, D. Guégan et S. Ladoucette, « Une mesure de la persistance dans les indices boursiers », décembre 2002.

95. S. Avouyi-Dovi, D. Guégan et S. Ladoucette, "What is the Best Approach to Measure the Interdependence between Different Markets? ," December 2002.
96. J.-B. Chatelain and A. Tiomo, "Investment, the Cost of Capital and Monetary Policy in the Nineties in France: A Panel Data Investigation," December 2002.
97. J.-B. Chatelain, A. Generale, I. Hernando, U. von Kalckreuth and P. Vermeulen, "Firm Investment and Monetary Policy Transmission in the Euro Area," December 2002.
98. J.-S. Mésonnier, « Banque centrale, taux de l'escompte et politique monétaire chez Henry Thornton (1760-1815) », décembre 2002.
99. M. Baghli, G. Cette et A. Sylvain, « Les déterminants du taux de marge en France et quelques autres grands pays industrialisés : Analyse empirique sur la période 1970-2000 », janvier 2003.
100. G. Cette and Ch. Pfister, "The Challenges of the "New Economy" for Monetary Policy," January 2003.
101. C. Bruneau, O. De Bandt, A. Flageollet and E. Michaux, "Forecasting Inflation using Economic Indicators: the Case of France," May 2003.
102. C. Bruneau, O. De Bandt and A. Flageollet, "Forecasting Inflation in the Euro Area," May 2003.
103. E. Jondeau and H. Le Bihan, "ML vs GMM Estimates of Hybrid Macroeconomic Models (With an Application to the "New Phillips Curve")," September 2003.
104. J. Matheron and T.-P. Maury, "Evaluating the Fit of Sticky Price Models," January 2004.
105. S. Moyen and J.-G. Sahuc, "Incorporating Labour Market Frictions into an Optimising-Based Monetary Policy Model," January 2004.
106. M. Baghli, V. Brunhes-Lesage, O. De Bandt, H. Fraise et J.-P. Villetelle, « MASCOTTE : Modèle d'Analyse et de préviSion de la COnjoncture TrimesTrielle », février 2004.
107. E. Jondeau and M. Rockinger, "The Bank Bias: Segmentation of French Fund Families," February 2004.
108. E. Jondeau and M. Rockinger, "Optimal Portfolio Allocation Under Higher Moments," February 2004.
109. C. Bordes et L. Clerc, « Stabilité des prix et stratégie de politique monétaire unique », mars 2004.
110. N. Belorgey, R. Lecat et T.-P. Maury, « Déterminants de la productivité par employé : une évaluation empirique en données de panel », avril 2004.
111. T.-P. Maury and B. Pluyaud, "The Breaks in per Capita Productivity Trends in a Number of Industrial Countries," April 2004.
112. G. Cette, J. Mairesse and Y. Kocoglu, "ICT Diffusion and Potential Output Growth," April 2004.
113. L. Baudry, H. Le Bihan, P. Sevestre and S. Tarrieu, "Price Rigidity. Evidence from the French CPI Micro-Data," September 2004.

114. C. Bruneau, O. De Bandt and A. Flageollet, "Inflation and the Markup in the Euro Area," September 2004.
115. J.-S. Mésonnier and J.-P. Renne, "A Time-Varying "Natural" Rate of Interest for the Euro Area," September 2004.
116. G. Cette, J. Lopez and P.-S. Noual, "Investment in Information and Communication Technologies: an Empirical Analysis," October 2004.
117. J.-S. Mésonnier et J.-P. Renne, « Règle de Taylor et politique monétaire dans la zone euro », octobre 2004.
118. J.-G. Sahuc, "Partial Indexation, Trend Inflation, and the Hybrid Phillips Curve," December 2004.
119. C. Loupias et B. Wigniolle, « Régime de retraite et chute de la natalité : évolution des mœurs ou arbitrage micro-économique ? », décembre 2004.
120. C. Loupias and R. Ricart, "Price Setting in France: new Evidence from Survey Data," December 2004.
121. S. Avouyi-Dovi and J. Matheron, "Interactions between Business Cycles, Stock Markets Cycles and Interest Rates: the Stylised Facts," January 2005.
122. L. Bilke, "Break in the Mean and Persistence of Inflation: a Sectoral Analysis of French CPI," January 2005.
123. S. Avouyi-Dovi and J. Matheron, "Technology Shocks and Monetary Policy in an Estimated Sticky Price Model of the US Economy," April 2005.
124. M. Dupaigne, P. Fève and J. Matheron, "Technology Shock and Employment: Do We Really Need DSGE Models with a Fall in Hours?," June 2005.
125. P. Fève and J. Matheron, "Can the Kydland-Prescott Model Pass the Cogley-Nason Test?," June 2005.
126. S. Avouyi-Dovi and J. Matheron, "Technology Shocks and Monetary Policy in an Estimated Sticky Price Model of the Euro Area," June 2005.
127. O. Loisel, "Central Bank Reputation in a Forward-Looking Model," June 2005.
128. B. Bellone, E. Gautier et S. Le Coent, « Les marchés financiers anticipent-ils les retournements conjoncturels ? », juillet 2005.
129. P. Fève, « La modélisation macro-économétrique dynamique », juillet 2005.
130. G. Cette, N. Dromel and D. Méda, "Opportunity Costs of Having a Child, Financial Constraints and Fertility," August 2005.
131. S. Goutron et D. Szpiro, « Excès de liquidité monétaire et prix des actifs », septembre 2005.
132. J. Baude, « L'impact des chocs boursiers sur le crédit en France depuis le milieu des années quatre-vingt-dix », septembre 2005.
133. R. Bourlès and G. Cette, "A Comparison of Structural Productivity Levels in the Major Industrialised Countries," October 2005.

134. T. Grunspan, "The Fed and the Question of Financial Stability: An Empirical Investigation," October 2005.
135. S. Fabiani, M. Druant, I. Hernando, C. Kwapil, B. Landau, C. Loupias, F. Martins, T. Mathä, R. Sabbatini, H. Stahl and A. Stockman, "The Pricing Behaviour of Firms in the Euro Area: New Survey Evidence," November 2005.
136. E. Dhyne, L. Alvarez, H. Le Bihan, G. Veronese, D. Dias, J. Hoffmann, N. Jonker, P. Lünemann, F. Rümmler and J. Vilminen, "Price Setting in the Euro Area: Some Stylized Facts from Individual Consumer Price Data," November 2005.
137. D. Fougère, H. Le Bihan and P. Sevestre, "Heterogeneity in Consumer Price Stickiness: A Microeconomic Investigation," November 2005.
138. L. Alvarez, E. Dhyne, M. Hoeberichts, C. Kwapil, H. Le Bihan, P. Lünemann, F. Martins, R. Sabbatini, H. Stahl, P. Vermeulen and J. Vilminen, "Sticky Prices in the Euro Area: a Summary of New Micro Evidence," November 2005.
139. E. Kharroubi, "Illiquidity, Financial Development and the Growth-Volatility Relationship," February 2006.
140. M. Baghli, C. Cahn and H. Fraise, "Is the Inflation-Output Nexus Asymmetric in the Euro Area," April 2006.
141. E. Jondeau and J-G. Sahuc, "Optimal Monetary Policy in an Estimated DSGE Model of the Euro Area with Cross-country Heterogeneity," April 2006.
142. S. Avouyi-Dovi, M. Brun, A. Dreyfus, F. Drumetz, V. Oung et J.-G. Sahuc, « La fonction de demande de monnaie pour la zone euro : un réexamen », mai 2006.
143. C. Jardet, "Term Structure Anomalies : Term Premium or Peso Problem?" May 2006.
144. S. Avouyi-Dovi, R. Kierzenkowski and C. Lubochinsky, "Are Business and Credit Cycles Converging or Diverging? A comparison of Poland, Hungary, the Czech Republic and the Euro Area", May 2006.
145. O. De Bandt, C. Bruneau and A. Flageollet, "Assessing Aggregate Comovements in France, Germany and Italy. Using a Non Stationary Factor Model of the Euro Area" June 2006.
146. M. Baghli, C. Cahn and J-P. Villetelle, "Estimating Potential Output with a Production Function for France, Germany and Italy", June 2006.
147. E. Fonteny, « La désaisonnalisation des séries d'agrégats monétaires et de crédit à la Banque de France : aspects théoriques et mise en œuvre », juin 2006.
148. J. Matheron and C. Poilly, "How Well Does a Small Structural Model with Sticky Prices and Wages Fit Postwar U.S. Data", July 2006.
149. E. Kharroubi, "Financial (Dis)Integration," July 2006.
150. J. Carrillo, P. Fève and J. Matheron, "Monetary Policy Inertia or Persistent Shocks?" July 2006.
151. C. Ewerhart, N. Cassola and N. Valla, "Declining Valuations and Equilibrium Bidding in Central Bank Refinancing Operations," August 2006.

152. D. Fougère, « Réformes structurelles sur le marché du travail : quels enseignements peut-on tirer des études existantes », août 2006.
153. D. Irac, “Revisiting the proximity-concentration trade-off: Distance and Horizontal Foreign Direct Investment in OECD Countries,” August 2006.
154. D. Irac and C. Minoiu, “Risk insurance in a Transition Economy: Evidence from Rural Romania,” August 2006.
155. H. Lustig and A. Verdelhan, “The Cross-Section of Foreign Currency Risk Premia and Consumption Growth Risk,” August 2006.
156. R. Boulès and G. Cette, “Trends in “structural” productivity levels in the major industrialized countries,” September 2006.
157. J.-S. Mésonnier, “The Reliability of Macroeconomic Forecasts based on Real Interest Rate Gap Estimates in Real Time: an Assessment for the Euro Area,” October 2006

Pour tous commentaires ou demandes sur les Notes d'Études et de Recherche, contacter la bibliothèque de la direction de la recherche à l'adresse suivante :

For any comment or enquiries on the Working Papers, contact the library of the Research Directorate at the following address :

BANQUE DE FRANCE  
41- 1404 Labolog  
75049 Paris Cedex 01  
tél : 0033 (0)1 42 92 49 55 ou 62 65  
fax :0033 (0)1 42 92 62 92  
email : [thierry.demoulin@banque-france.fr](mailto:thierry.demoulin@banque-france.fr)  
[jeannine.agoutin@banque-france.fr](mailto:jeannine.agoutin@banque-france.fr)