

## Corporate bankruptcies – France • July 2018

### In June 2018, the number of corporate bankruptcies decreased by 5.8% year-on-year

- At the end of June 2018, the aggregate number of corporate bankruptcies over the last 12 months amounted to 52,559 down 5.8% compared to June 2017 (see tables A and B and charts 1 and 2).

### Corporate bankruptcies decreased in most business sectors

- The agriculture, real estate activities and industry sectors recorded the strongest decreases in bankruptcies over the past 12 months (-12.2%, -8.6% and -8.1%, respectively). Bankruptcies also decreased substantially in other sectors, particularly in construction (-7.7%).
- However, corporate bankruptcies increased in the transportation and storage sector (+4.9%).

### In April 2018, SME bankruptcies decreased

- Bankruptcies overall decreased for SMEs (-5.9%). By contrast, bankruptcies increased for Intermediate-sized enterprises (ISEs) and large firms (+10 bankruptcies over 12 months, see table B).

The outstanding loan amount of firms filing for bankruptcy over the past 12 months accounts, at the end of June, for nearly 0.35% of the total outstanding loan amount reported to the Banque de France's Central Credit Register.

The aggregate number of corporate bankruptcies decreased by 5.9% at the end of July 2018, according to provisional data (see tables A and B and chart 2).

To find out more: data on business start-ups are reported by the French National Institute of Statistics and Economic Studies (INSEE): [Business start-ups on the INSEE's website](#)

### A – Corporate bankruptcies by sector

Bankruptcies in number of legal units, year on year change (%)

Business sector	Aggregate over the last 12 months <sup>a</sup> (gross data)					Quarter to Quarter sa / wda <sup>bc</sup>		Monthly data sa / wda <sup>c</sup>		
	June 17	June 18	June 18/June 17	July 18 prov.	July 18 / July 17	June 18	Apr. 18	May 18	June 18	
Agriculture, forestry and fishing (AZ)	1,549	1,360	-12.2 %	1,309	-16.2 %	-4.7 %	113	115	78	
Industry (BE)	4,049	3,721	-8.1 %	3,691	-7.6 %	-4.4 %	295	303	304	
Construction (FZ)	12,588	11,620	-7.7 %	11,625	-6.9 %	7.0 %	975	964	976	
Wholesale and retail trade; repair of motor vehicles and motorcycles (G)	12,185	11,516	-5.5 %	11,475	-5.8 %	4.5 %	946	998	947	
Transportation and storage (H)	1,791	1,879	4.9 %	1,931	8.0 %	3.7 %	172	156	166	
Accommodation and food service activities (I)	7,360	7,137	-3.0 %	7,125	-2.7 %	8.3 %	589	630	612	
Information and communication (JZ)	1,369	1,335	-2.5 %	1,343	-2.2 %	12.7 %	112	114	114	
Financial and insurance activities (KZ)	1,085	1,036	-4.5 %	1,045	-4.0 %	28.7 %	105	100	88	
Real estate activities (LZ)	1,882	1,721	-8.6 %	1,691	-9.2 %	-11.0 %	146	141	112	
Advisory & Business support activities (MN)	5,948	5,628	-5.4 %	5,583	-5.8 %	-0.9 %	479	449	440	
Education, human health and social work services, Arts, entertainment and recreation, Other service activities (P to S)	5,530	5,156	-6.8 %	5,079	-7.9 %	0.4 %	451	414	414	
<b>All firms<sup>d</sup></b>	<b>55,822</b>	<b>52,559</b>	<b>-5.8 %</b>	<b>52,347</b>	<b>-5.9 %</b>	<b>3.3 %</b>	<b>4,430</b>	<b>4,400</b>	<b>4,327</b>	

Source: Banque de France – database: Fiben. Data available at end-August 2018

Calculation : Banque de France – Companies Directorate – Companies Observatory

<sup>a</sup> Aggregate number of corporate bankruptcies over the past 12 months compared to the same aggregate one year ago

<sup>b</sup> Aggregate number of corporate bankruptcies over the past 3 months compared to the same aggregate three months ago

<sup>c</sup> sa : seasonally adjusted – wda : working day adjusted

<sup>d</sup> The line « All firms » includes legal units whose business sector is not known

## B – Corporate bankruptcies by firm size

Bankruptcies in number of legal units, year on year change (%)

Size	Aggregate over the last 12 months <sup>a</sup> (gross data)					Quarter to quarter	Monthly data		
	June 17	June 18	June 18/June 17	July 18 prov.	July 18 / July 17	sa / wda <sup>bc</sup>	Apr. 18	May 18	June 18
SME, among them	55,785	52,512	-5.9 %	52,301	-5.9 %	3.3 %	4,425	4,398	4,325
Micro-enterprises and unknown firm's size	52,589	49,540	-5.8 %	49,331	-5.8 %	3.7 %	4,173	4,146	4,102
Very small firms	1,967	1,842	-6.4 %	1,835	-6.5 %	-4.8 %	142	153	149
Small firms	919	843	-8.3 %	848	-7.5 %	-11.4 %	73	74	46
Medium-size firms	310	287	-7.4 %	287	-6.5 %	-1.8 %	28	24	19
ISE – Large Firms	37	47	27.0 %	46	15.0 %				
<b>All firms</b>	<b>55,822</b>	<b>52,559</b>	<b>-5.8 %</b>	<b>52,347</b>	<b>-5.9 %</b>	<b>3.3 %</b>	<b>4,430</b>	<b>4,400</b>	<b>4,327</b>

Source: Banque de France – database: Fiben. Data available at end-August 2018

Calculation : Banque de France – Companies Directorate – Companies Observatory

<sup>a</sup> Aggregate number of corporate bankruptcies over the past 12 months compared to the same aggregate one year ago

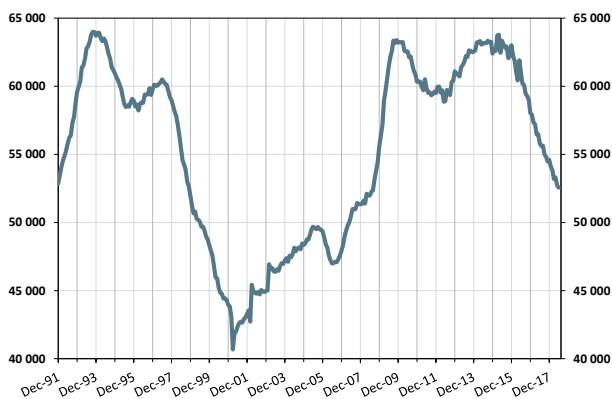
<sup>b</sup> Aggregate number of corporate bankruptcies over the past 3 months compared to the same aggregate three months ago

<sup>c</sup> sa : seasonally adjusted – wda : working day adjusted

## C – Changes in corporate bankruptcies

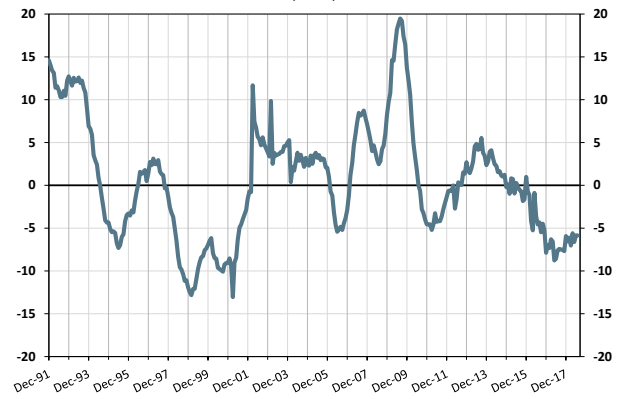
### 1 – Number of bankruptcies

Aggregate number of bankruptcies over the past 12 months  
From Dec. 1991 to June 2018



### 2 – Change in bankruptcies

Year-on-year change in the 12-month aggregate  
From Dec. 1991 to June 2018 (+ July 2018 provisional)  
(in %)



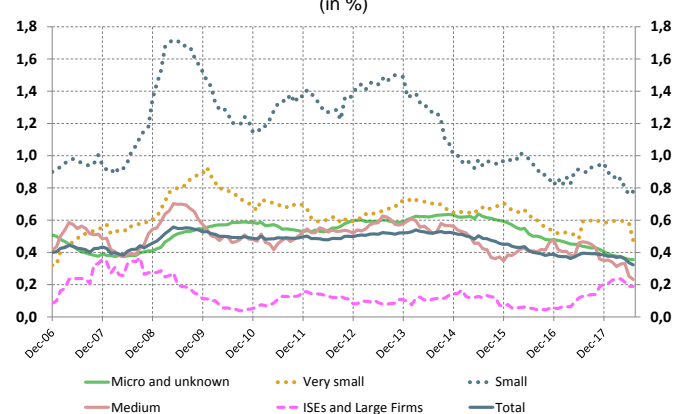
### 3 – Loan amounts of bankrupt non-financial firms over loan amount of all firms

Aggregate over the past 12 months  
From Dec. 2006 to June 2018 (+ July 2018 provisional)  
(in %)



### 4 – Loan amounts of bankrupt non-financial firms over loan amount of all firms – broken down by firm size

Aggregate over the past 12 months  
From Dec. 2006 to June 2018 (+ July 2018 provisional)  
(in %)



Source: Banque de France, Companies Directorate, Data available at end-August 2018

